



贵州惠泮众一机械制造有限公司

G.Y.HOPH STROVE TOOLS MANUFACTURE CO.,LTD

Address: No.108,Development Ave,Xiaohe Economic and Technology Development Zone,Guiyang,Guizhou,China.

www.hophstrove.com Tel:+86 851 8383 5233 Fax: +86 851 8380 6385

DTH

ROCK DRILLING TOOLS



For all your rock drilling tools needs.



Global Business Department

T:+86 851 8383 5233

M:+8618275020930

E:josh@hophtools.com

Domestic Business Department

T:+86 851 8383 5233

M:+8613984313082

HOPH[®]

This page has been intentionally left blank for information recording.



About us

G.Y. HOPH STROVE TOOLS MANUFACTURE CO.,LTD (HOPH) has a team of product designers, metallurgical experts and tool specialists who are constantly advancing drilling technology for the entire industry. As a national-level new high-tech enterprise and a standing council member in the association for Drilling Steel and Tool Industry, HOPH serves China and the world with high quality drilling tools. With a profound research and development of anti-fatigue of drill steels and rock drilling tools performance, HOPH has gained gratifying annual sales amount and market share growth year by year. Up to now, customers from over 40 countries have proven HOPH rock drilling tools' reliability and performance. HOPH business line covers all construction, quarrying and mining, blast applications and forepoling, from the softest to the hardest of rock conditions.

Our strength lies in our team of creativity, know-how, continuous R&D and prompt response. The R&D team has experts with more than 30 years experience in rock drilling and blasting field. The financial team has listed company working background and ability to deal with international business. The sales engineers team has English, Russian and Spanish speakers who have experience of working in the drilling and blasting industry and international business over 5-10 years.

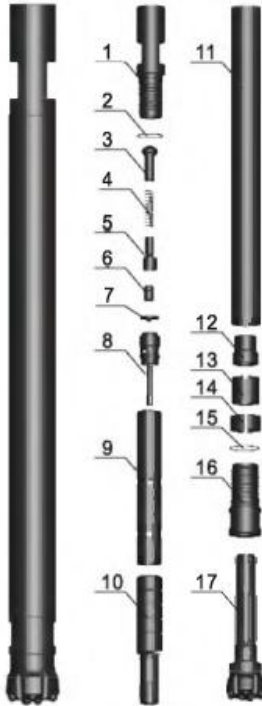
Table of Contents

1 INCH	
BR1W DTH HAMMER,BIT WITHOUT BLOW TUBE/FOOT VALVE-----	1
2 INCH	
BR2W DTH HAMMER ,BIT WITHOUT BLOW TUBE/FOOT VALVE-----	2
3 INCH	
BR3W DTH HAMMER,BIT WITHOUT BLOW TUBE/FOOT VALVE -----	3
DHD3.5 DTH HAMMER,BIT WITH BLOW TUBE/FOOT VALVE -----	4
DHD3.5W DTH HAMMER,BIT WITHOUT BLOW TUBE/FOOT VALVE-----	5
COP32W DTH HAMMER,BIT WITHOUT BLOW TUBE/FOOT VALVE-----	6
MISSION30W DTH HAMMER,BIT WITHOUT BLOW TUBE/FOOT VALVE-----	7
4 INCH	
COP44SW DTH HAMMER,BIT WITHOUT BLOW TUBE/FOOT VALVE-----	8
COP44 DTH HAMMER,BIT WITH BLOW TUBE/FOOT VALVE-----	9
COP44W DTH HAMMER,BIT WITHOUT BLOW TUBE/FOOT VALVE-----	10
QL40 DTH HAMMER,BIT WITH BLOW TUBE/FOOT VALVE-----	11
QL40W DTH HAMMER,BIT WITHOUT BLOW TUBE/FOOT VALVE-----	12
SD4 DTH HAMMER,BIT WITH BLOW TUBE/FOOT VALVE-----	13
MISSION40W DTH HAMMER,BIT WITHOUT BLOW TUBE/FOOT VALVE-----	14
MISSION40WI DTH HAMMER,BIT WITHOUT BLOW TUBE/FOOT VALVE AND INTERNAL CYLINDER-----	15
5 INCH	
COP54SW DTH HAMMER,BIT WITHOUT BLOW TUBE/FOOT VALVE-----	16
COP54 DTH HAMMER,BIT WITH BLOW TUBE/FOOT VALVE-----	17
COP54W DTH HAMMER,BIT WITHOUT BLOW TUBE/FOOT VALVE-----	18
QL50 DTH HAMMER,BIT WITH BLOW TUBE/FOOT VALVE-----	19
QL50W DTH HAMMER,BIT WITHOUT BLOW TUBE/FOOT VALVE-----	20
SD5 DTH HAMMER,BIT WITH BLOW TUBE/FOOT VALVE-----	21
SD5W DTH HAMMER,BIT WITHOUT BLOW TUBE/FOOT VALVE-----	22
MISSION50W DTH HAMMER,BIT WITHOUT BLOW TUBE/FOOT VALVE-----	23
MISSION50WI DTH HAMMER,BIT WITHOUT BLOW TUBE/FOOT VALVE AND INTERNAL CYLINDER-----	24
6 INCH	
COP64 DTH HAMMER,BIT WITH BLOW TUBE/FOOT VALVE-----	25
COP64W DTH HAMMER,BIT WITHOUT BLOW TUBE/FOOT VALVE-----	26
QL60 DTH HAMMER,BIT WITH BLOW TUBE/FOOT VALVE-----	27
QL60W DTH HAMMER,BIT WITHOUT BLOW TUBE/FOOT VALVE-----	28
SD6 DTH HAMMER,BIT WITH BLOW TUBE/FOOT VALVE-----	29
SD6W DTH HAMMER,BIT WITHOUT BLOW TUBE/FOOT VALVE-----	30
MISSION60W DTH HAMMER,BIT WITHOUT BLOW TUBE/FOOT VALVE-----	31
MISSION60WI DTH HAMMER,BIT WITHOUT BLOW TUBE/FOOT VALVE AND INTERNAL CYLINDER-----	32
COP66WI DTH HAMMER,BIT WITHOUT BLOW TUBE/FOOT VALVE-----	33
7 INCH	
QL60W DTH HAMMER,BIT WITHOUT BLOW TUBE/FOOT VALVE-----	34
8 INCH	
COP84 DTH HAMMER,BIT WITH BLOW TUBE/FOOT VALVE-----	35
COP84W DTH HAMMER,BIT WITHOUT BLOW TUBE/FOOT VALVE-----	36
QL80 DTH HAMMER,BIT WITH BLOW TUBE/FOOT VALVE-----	37
QL80W DTH HAMMER,BIT WITHOUT BLOW TUBE/FOOT VALVE-----	38
SD8 DTH HAMMER,BIT WITH BLOW TUBE/FOOT VALVE-----	39
SD8W DTH HAMMER,BIT WITHOUT BLOW TUBE/FOOT VALVE-----	40
MISSION80W DTH HAMMER,BIT WITHOUT BLOW TUBE/FOOT VALVE-----	41
MISSION80WI DTH HAMMER,BIT WITHOUT BLOW TUBE/FOOT VALVE AND INTERNAL CYLINDER-----	42
9 INCH	
QL80W DTH HAMMER,BIT WITHOUT BLOW TUBE/FOOT VALVE-----	43
10 INCH	
SD10 DTH HAMMER,BIT WITH BLOW TUBE/FOOT VALVE-----	44
SD10W DTH HAMMER,BIT WITHOUT BLOW TUBE/FOOT VALVE-----	45
NUMA100 DTH HAMMER,BIT WITH BLOW TUBE/FOOT VALVE-----	46
NUMA100 DTH HAMMER,BIT WITHOUT BLOW TUBE/FOOT VALVE-----	47
12 INCH	
SD12 DTH HAMMER,BIT WITH BLOW TUBE/FOOT VALVE-----	48
SD12W DTH HAMMER,BIT WITHOUT BLOW TUBE/FOOT VALVE-----	49
NUMA125W DTH HAMMER,BIT WITH BLOW TUBE/FOOT VALVE-----	50
DRILL PIPES,ADAPTERS,BREAKOUT BENCHES,BACK HAMMERS-----	51-55

1 INCH

BR1W DTH HAMMER,

BIT WITHOUT BLOW TUBE/FOOT VALVE



Part Name	Part Number	Weight(kg)
1.Top Sub	HOPH-BR1-1	1.60
2."O"Ring of Top sub	HOPH-BR1-2	0.01
3.Check Valve	HOPH-BR1-3	0.10
4.Spring	HOPH-BR1-4	0.05
5.AD Sleeve	HOPH-BR1-5	0.30
6.Valve Pin	HOPH-BR1-6	0.01
7.Valve	HOPH-BR1-7	0.01
8.Air Distributor(AD)	HOPH-BR1-8	0.60
9.Internal Cylinder	HOPH-BR1-9	0.70
10.Piston	HOPH-BR1-10	0.95
11. External Cylinder	HOPH-BR1-11	3.40
12. Guided Sleeve	HOPH-BR1-12	0.20
13. Retainer Ring	HOPH-BR1-13	0.10
14. Stop Ring	HOPH-BR1-14	0.10
15. "O"Ring of Drive Chuck	HOPH-BR1-15	0.01
16. Drive Chuck	HOPH-BR1-16	0.65
17. Drill Bit	HOPH-BR1-17	

Technical Parameters

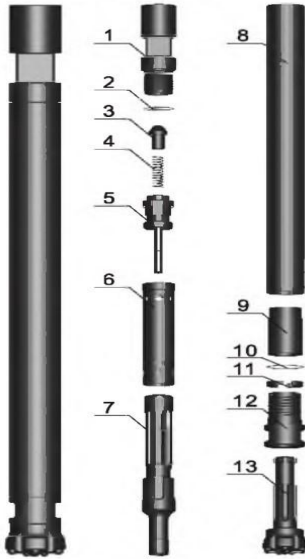
Length(without bit)	Weigh(without bit)	External diameter	Bit shank	Hole range	Connection thread
708mm	8.70kg	54mm	BR1	60mm-76mm	RD40 BOX
Working pressure	Impact rate at 14bar	Speed recommended	Pull force recommended	Reference air consumption(m3 / min)	
7-17bar	38HZ	30-70rpm	4KN	14Bar	17.2Bar
				4.50	8.80

DTH Drill Bit Design

BR1W-60mm-CV	BR1W-64mm-FF	BR1W-64mm-CV
BR1W-70mm-CV	BR1W-70mm-FF	BR1W-76mm-FF

2 INCH BR2W DTH HAMMER,

BIT WITHOUT BLOW TUBE/FOOT VALVE



Part Name	Part Number	Weight(kg)
1.Top Sub	HOPH-BR2-1	2.95
2."O"Ring of Top sub	HOPH-BR2-2	0.01
3.Check Valve	HOPH-BR2-3	0.10
4.Spring	HOPH-BR2-4	0.05
5.Air Distributor	HOPH-BR2-5	0.40
6.Internal Cylinder	HOPH-BR2-6	0.90
7.Piston	HOPH-BR2-7	2.70
8.External Cylinder	HOPH-BR2-8	5.35
9.Guided Sleeve	HOPH-BR2-9	0.55
10."O"Ring of Stop Ring	HOPH-BR2-10	0.01
11.Stop Ring	HOPH-BR2-11	0.10
12 Drive Chuck	HOPH-BR2-12	1.10
13.Drill Bit	HOPH-BR2-13	

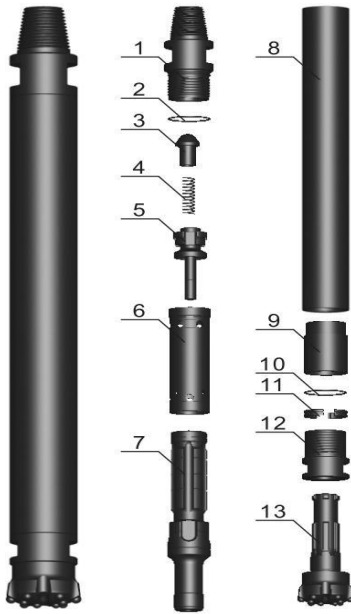
Technical Parameters

Length(without bit)	Weigth(without bit)	External diameter	Bit shank	Hole range	Connection thread
868mm	14.50kg	63mm	BR2	70mm-95mm	RD50 BOX
Working pressure	Impact rate at 17bar	Speed recommended	Pull force recommended	Reference air consumption(m3 / min)	
7-20bar	35HZ	30-70rpm	5KN	14Bar	17.2Bar
				5.50	8.00

DTH Drill Bit Design

 Gauge 6 x 1 3mm, Face 2x10mm,2x11mm	 Gauge 6 x 1 2mm, Face 5x10mm	 Gauge 6 x 1 3mm, Face 2x10mm,3x11mm
BR2W-76mm-CV	BR2W-76mm-FF	BR2W-80mm-CV
 Gauge 6 x 1 3mm, Face 2x11mm,4x11mm	 Gauge 6 x 1 3mm, Face 6x10mm	 Gauge 8 x 1 2mm, Face 2x12mm,4x12mm
BR2W-90mm-CV	BR2W-90mm-FF	BR2W-95mm-CC

3 INCH BR3W DTH HAMMER, BIT WITHOUT BLOW TUBE/FOOT VALVE



Part Name	Part Number	Weight(kg)
1.Top Sub	HOPH-BR3-1	2.95
2."O"Ring of Top sub	HOPH-BR3-2	0.01
3.Check Valve	HOPH-BR3-3	0.10
4.Spring	HOPH-BR3-4	0.05
5.Air Distributor	HOPH-BR3-5	0.40
6.Internal Cylinder	HOPH-BR3-6	0.90
7.Piston	HOPH-BR3-7	2.70
8.External Cylinder	HOPH-BR3-8	5.35
9.Guided Sleeve	HOPH-BR3-9	0.55
10."O"Ring of Stop Ring	HOPH-BR3-10	0.01
11.Stop Ring	HOPH-BR3-11	0.10
12.Drive Chuck	HOPH-BR3-12	1.10
13.Drill Bit	HOPH-BR3-13	

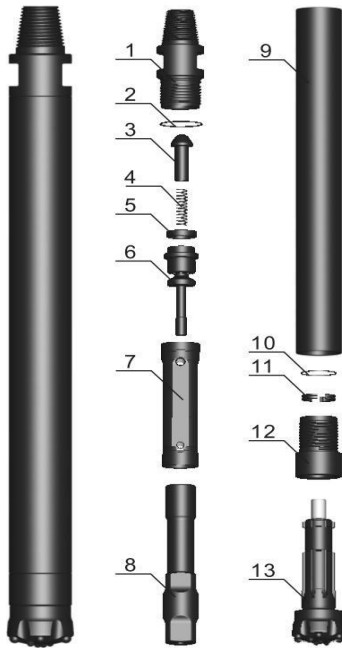
Technical Parameters

Length(without bit)	Weigth(without bit)	External diameter	Bit shank	Hole range	Connection thread
873mm	24.60kg	82mm	BR3	90mm-110mm	API 2 3/8"Reg
Working pressure	Impact rate at 17bar	Speed recommended	Pull force recommended	Reference air consumption(m ³ /min)	
7-20bar	32HZ	30-70rpm	5KN	14Bar	20Bar
				5.50	10.50

DTH Drill Bit Design

BR3W-90mm-CV	BR3W-90mm-FF	BR3W-95mm-CV
BR3W-100mm-CV	BR3W-105mm-FF	BR3W-105mm-FF

3 INCH DHD3.5 DTH HAMMER, BIT WITH BLOW TUBE/FOOT VALVE



Part Name	Part Number	Weight(kg)
1.Top Sub	HOPH-D3-1	4.40
2."O"Ring of Top sub	HOPH-D3-2	0.01
3.Check Valve	HOPH-D3-3	0.20
4.Spring	HOPH-D3-4	0.02
5.Compression Buffer	HOPH-D3-5	0.02
6.Air Distributor	HOPH-D3-6	1.40
7.Internal Cylinder	HOPH-D3-7	1.50
8.Piston	HOPH-D3-8	5.60
9.External Cylinder	HOPH-D3-9	9.80
10."O"Ring of Stop Ring	HOPH-D3-10	0.01
11.Stop Ring	HOPH-D3-11	0.15
12.Drive Chuck	HOPH-D3-12	1.90
13.Drill Bit	HOPH-D3-13	

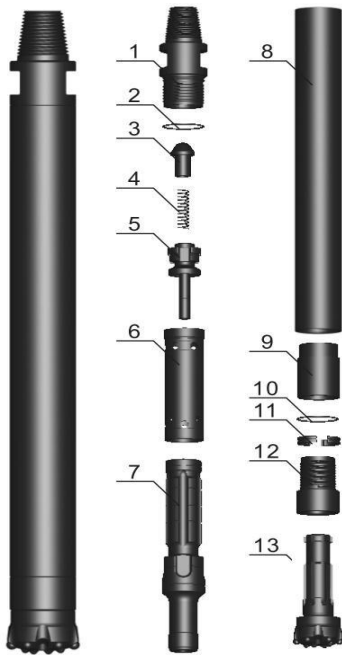
Technical Parameters

Length(without bit)	Weigth(without bit)	External diameter	Bit shank	Hole range	Connection thread
930mm	25.00kg	82mm	DHD3.5 COP35	90mm-110mm	API 2 3/8"Reg
Working pressure	Impact rate at 17bar	Speed recommended	Pull force recommended	Reference air consumption (m ³ /min)	
7-25bar	28HZ	30-70rpm	6KN	14Bar	24Bar
				6.50	13.70

DTH Drill Bit Design

Gauge 6 x 14mm, Face 2x12mm,3x13mm	Gauge 6 x 14mm, Face 4x12mm	Gauge 6 x 14mm, Face 2x13mm,2x13mm
DHD3.5-90mm-CV	DHD3.5-90mm-FF	DHD3.5-95mm-CV
Gauge 6 x 14mm, Face 2x13mm,3x13mm	Gauge 6 x 14mm, Face 2x13mm,3x13mm	Gauge 8 x 13mm, Face 7x12mm
DHD3.5-100mm-CV	DHD3.5-105mm-FF	DHD3.5-105mm-FF

3 INCH DHD3.5W DTH HAMMER, BIT WITHOUT BLOW TUBE/FOOT VALVE



Part Name	Part Number	Weight(kg)
1.Top Sub	HOPH-D3-1W	4.40
2."O"Ring of Top sub	HOPH-D3-2W	0.01
3.Check Valve	HOPH-D3-3W	0.20
4.Spring	HOPH-D3-4W	0.02
5.Air Distributor	HOPH-D3-5W	0.80
6.Internal Cylinder	HOPH-D3-6W	1.30
7.Piston	HOPH-D3-7W	4.70
8.External Cylinder	HOPH-D3-8W	9.90
9.Guided Sleeve	HOPH-D3-9W	1.00
10."O"Ring of Stop Ring	HOPH-D3-10W	0.01
11.Stop Ring	HOPH-D3-11W	0.15
12.Drive Chuck	HOPH-D3-12W	1.90
13.Drill Bit	HOPH-D3-13W	

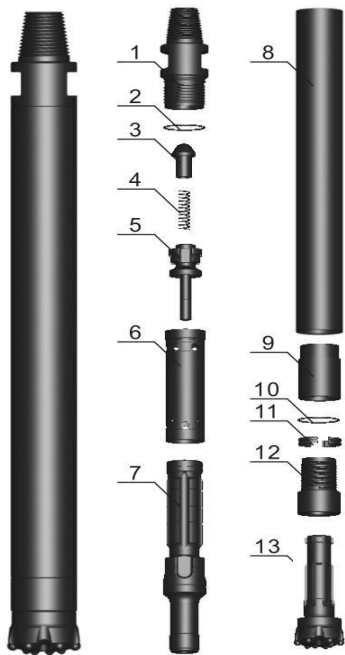
Technical Parameters

Length(without bit)	Weigh(without bit)	External diameter	Bit shank	Hole range	Connection thread
888mm	25.00kg	82mm	DHD3.5 COP35	90mm-110mm	API 2 3/8"Reg
Working pressure	Impact rate at 17bar	Speed recommended	Pull force recommended	Reference air consumption (m ³ /min)	
7-25bar	32HZ	30-70rpm	5KN	14Bar	24Bar
				5.50	12.00

DTH Drill Bit Design

Gauge 6 x 14mm, Face 2x12mm,3x13mm	Gauge 6 x 14mm, Face 4x12mm	Gauge 6 x 14mm, Face 2x13mm,2x13mm
DHD3.5W-90mm-CV	DHD3.5W-90mm-FF	DHD3.5W-95mm-CV
Gauge 6 x 14mm, Face 2x13mm,3x13mm	Gauge 6 x 14mm, Face 2x13mm,3x13mm	Gauge 8 x 13mm, Face 7x12mm
DHD3.5W-100mm-CV	DHD3.5W-105mm-FF	DHD3.5W-105mm-FF

3 INCH COP32W DTH HAMMER, BIT WITHOUT BLOW TUBE/FOOT VALVE



Part Name	Part Number	Weight(kg)
1.Top Sub	HOPH-C3-1W	4.40
2."O"Ring of Top sub	HOPH-C3-2W	0.01
3.Check Valve	HOPH-C3-3W	0.14
4.Spring	HOPH-C3-4W	0.01
5.Air Distributor	HOPH-C3-5W	0.80
6.Internal Cylinder	HOPH-C3-6W	1.40
7.Piston	HOPH-C3-7W	4.70
8.External Cylinder	HOPH-C3-8W	8.00
9.Guided Sleeve	HOPH-C3-9W	0.60
10."O"Ring of Stop Ring	HOPH-C3-10W	0.01
11.Stop Ring	HOPH-C3-11W	0.15
12.Drive Chuck	HOPH-C3-12W	2.20
13.Drill Bit	HOPH-C3-13W	

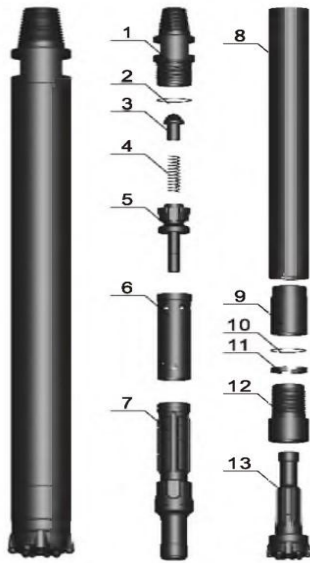
Technical Parameters

Length(without bit)	Weigth(without bit)	External diameter	Bit shank	Hole range	Connection thread
923mm	22.40kg	82mm	COP32	90mm-110mm	API 2 3/8"Reg
Working pressure	Impact rate at 17bar	Speed recommended	Pull force recommended	Reference air consumption (m ³ /min)	
7-25bar	32HZ	30-70rpm	5KN	14Bar	24Bar
				5.50	12.00

DTH Drill Bit Design

 Gauge 6 x 14mm, Face 2x12mm,3x13mm	 Gauge 6 x 14mm, Face 4x12mm	 Gauge 6 x 14mm, Face 2x13mm,2x13mm
COP32W-90mm-CV	COP32W-90mm-FF	COP32W-95mm-CV
 Gauge 6 x 14mm, Face 2x13mm,3x13mm	 Gauge 6 x 14mm, Face 2x13mm,3x13mm	 Gauge 8 x 13mm, Face 7x12mm
COP32W-100mm-CV	COP32W-105mm-FF	COP32W-105mm-FF

3 INCH MISSION30W DTH HAMMER, BIT WITHOUT BLOW TUBE/FOOT VALVE



PartName	Part Number	Weight (kg)
1.Top Sub	HOPH-M3-1W	4.40
2."O"Ring of Top sub	HOPH-M3-2W	0.01
3.Check Valve	HOPH-M3-3W	0.14
4.Spring	HOPH-M3-4W	0.01
5.Air Distributor	HOPH-M3-5W	0.80
6.Internal Cylinder	HOPH-M3-6W	1.40
7.Piston	HOPH-M3-7W	4.70
8.External Cylinder	HOPH-M3-8W	8.00
9.Guided Sleeve	HOPH-M3-9W	1.20
10."O"Ring of Stop Ring	HOPH-M3-10W	0.01
11.Stop Ring	HOPH-M3-11W	0.22
12 Drive Chuck	HOPH-M3-12W	2.30
13.Drill Bit	HOPH-M3-13W	

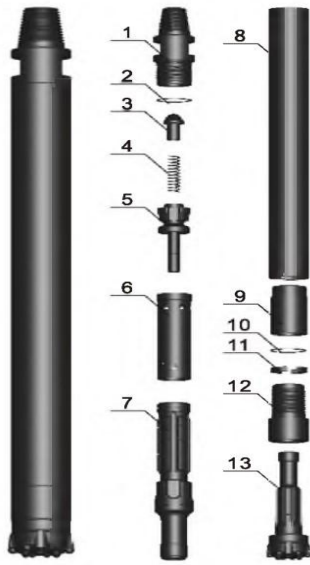
Technical Parameters

Length(without bit)	Weigth(without bit)	External diameter	Bit shank	Hole range	Connection thread
955mm	23.20kg	82mm	MISSION30	90mm-110mm	API 2 3/8"Reg
Working pressure	Impact rate at 17bar	Speed recommended	Pull force recommended	Reference air consumption(m3 / min)	
7-25bar	32HZ	30-70rpm	5KN	14Bar	24Bar
				5.50	12.00

DTH Drill Bit Design

 Gauge 6 x 14mm, Face 2x12mm,3x13mm	 Gauge 6 x 14mm, Face 4x12mm	 Gauge 6 x 14mm, Face 2x13mm,2x13mm
MISSION30W-90mm-CV	MISSION30W-90mm-FF	MISSION30W-95mm-CV
 Gauge 6 x 14mm, Face 2x13mm,3x13mm	 Gauge 6 x 14mm, Face 2x13mm,3x13mm	 Gauge 8 x 13mm, Face 7x12mm
MISSION30W-100mm-CV	MISSION30W-105mm-FF	MISSION30W-105mm-FF

4 INCH COP44SW DTH HAMMER, BIT WITHOUT BLOW TUBE/FOOT VALVE



PartName	Part Number	Weight (kg)
1.Top Sub	HOPH-C4-1SW	6.00
2."O"Ring of Top sub	HOPH-C4-2SW	0.01
3.Check Valve	HOPH-C4-3SW	0.50
4.Spring	HOPH-C4-4SW	0.05
5.Air Distributor	HOPH-C4-5SW	1.30
6.Internal Cylinder	HOPH-C4-6SW	1.90
7.Piston	HOPH-C4-7SW	7.80
8.External Cylinder	HOPH-C4-8SW	14.60
9.Guided Sleeve	HOPH-C4-9SW	1.20
10."O"Ring of Stop Ring	HOPH-C4-10SW	0.01
11.Stop Ring	HOPH-C4-11SW	0.20
12.Drive Chuck	HOPH-C4-12SW	3.40
13.Drill Bit	HOPH-C4-13SW	

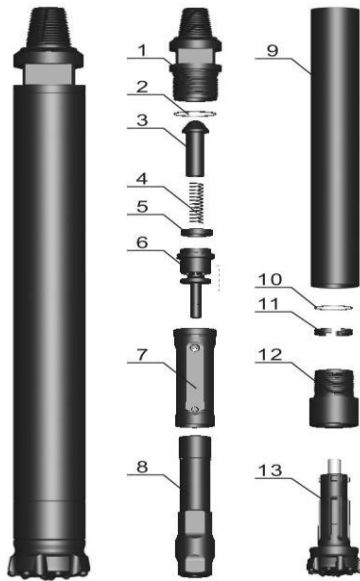
Technical Parameters

Length(without bit)	Weigth(without bit)	External diameter	Bit shank	Hole range	Connection thread
986mm	37.00kg	92mm	COP44 DHD340A	105mm-120mm	API 2 3/8"Reg
Working pressure	Impact rate at 17bar	Speed recommended	Pull force recommended	Reference air consumption(m3 / min)	
10-25bar	30HZ	30-70rpm	6KN	14Bar	24Bar
				7.40	15.00

DTH Drill Bit Design

COP44SW-105mm-CV	COP44SW-105mm-FF	COP44SW-115mm-CV
COP44SW-115mm-CV	COP44SW-115mm-FF	COP44SW-120mm-FF

4 INCH COP44 DTH HAMMER, BIT WITH BLOW TUBE/FOOT VALVE



Part Name	Part Number	Weight(kg)
1.Top Sub	HOPH-C4-1	7.00
2."O"Ring of Top sub	HOPH-C4-2	0.01
3.Check Valve	HOPH-C4-3	0.50
4.Spring	HOPH-C4-4	0.05
5.Compression Buffer	HOPH-C4-4	0.05
6.Air Distributor	HOPH-C4-5	1.30
7.Internal Cylinder	HOPH-C4-6	1.90
8.Piston	HOPH-C4-7	7.80
9.External Cylinder	HOPH-C4-8	14.60
10."O"Ring of Stop Ring	HOPH-C4-10	0.01
11.Stop Ring	HOPH-C4-11	0.20
12.Drive Chuck	HOPH-C4-12	3.40
13.Drill Bit	HOPH-C4-13	

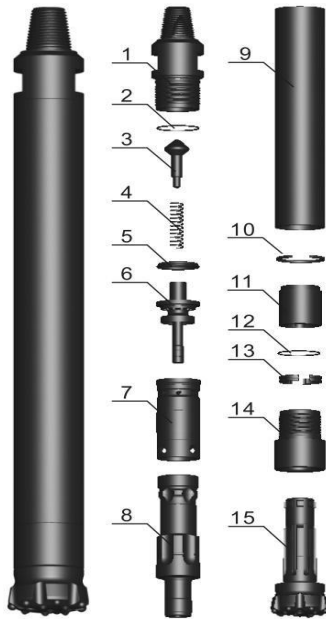
Technical Parameters

Length(without bit)	Weigth(without bit)	External diameter	Bit shank	Hole range	Connection thread
1032mm	40.70kg	99mm	COP44 DHD340A	110mm-130mm	API 2 3/8"Reg
Working pressure	Impact rate at 17bar	Speed recommended	Pull force recommended	Reference air consumption (m ³ /min)	
10-25bar	28HZ	30-70rpm	8KN	14Bar	24Bar
				7.40	15.00

DTH Drill Bit Design

Gauge 7 x 1 4mm, Face 2x14mm,4x14mm	Gauge 7 x 1 6mm, Face 2x14mm,4x14mm	Gauge 8 x 1 4mm, Face 2x14mm,4x14mm
COP44-115mm-CV	COP44-115mm-CV	COP44-115mm-CV
Gauge 8 x 1 4mm, Face 3x13mm,4x14mm	Gauge 8 x 1 4mm, Face 7x13mm	Gauge 8 x 1 4mm, Face 7x14mm
COP44-125mm-CV	COP44-127mm-FF	COP44-130mm-FF

4 INCH COP44W DTH HAMMER, BIT WITHOUT BLOW TUBE/FOOT VALVE



Part Name	Part Number	Weight(kg)
1.Top Sub	HOPH-C4-1W	6.55
2."O"Ring of Top sub	HOPH-C4-2W	0.01
3.Check Valve	HOPH-C4-3W	0.20
4.Spring	HOPH-C4-4W	0.10
5.Compression Buffer	HOPH-C4-5W	0.20
6.Air Distributor	HOPH-C4-6W	1.40
7.Internal Cylinder	HOPH-C4-7W	1.35
8.Piston	HOPH-C4-8W	7.85
9.External Cylinder	HOPH-C4-9W	13.25
10.Retainer Ring	HOPH-C4-10W	0.20
11.Guided Sleeve	HOPH-C4-11W	1.85
12."O"Ring of Stop Ring	HOPH-C4-12W	0.01
13.Stop Ring	HOPH-C4-13W	0.25
14.Drive Chuck	HOHP-C4-14W	3.95
15.Drill Bit	HOPH-C4-15W	

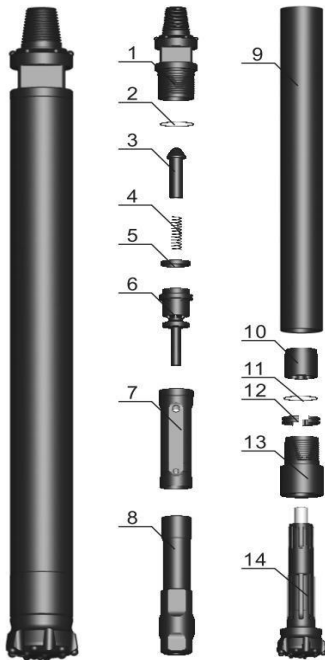
Technical Parameters

Length(without bit)	Weigth(without bit)	External diameter	Bit shank	Hole range	Connection thread
927mm	37.40kg	100mm	COP44 DHD340A	110mm-130mm	API 2 3/8"Reg
Working pressure	Impact rate at 17bar	Speed Recommended	Pull force recommended	Reference air consumption (m3/min)	
10-25bar	35HZ	30-70rpm	7kN	14Bar	24Bar
				6.50	13.50

DTH Drill Bit Design

COP44W-115mm-CV	COP44W-115mm-CV	COP44W-115mm-CV
COP44W-125mm-CV	COP44W-127mm-FF	COP44W-130mm-FF

4 INCH QL40 DTH HAMMER, BIT WITH BLOW TUBE/FOOT VALVE



Part Name	Part Number	Weight(kg)
1.Top Sub	HOPH-Q4-1	7.00
2."O"Ring of Top sub	HOPH-Q4-2	0.01
3.Check Valve	HOPH-Q4-3	0.42
4.Spring	HOPH-Q4-4	0.04
5.Compression Buffer	HOPH-Q4-5	0.04
6.Air Distributor	HOPH-Q4-6	2.20
7.Internal Cylinder	HOPH-Q4-7	2.30
8.Piston	HOPH-Q4-8	8.80
9.External Cylinder	HOPH-Q4-9	17.5
10.Guided Sleeve	HOPH-Q4-10	0.80
11."O"Ring of Stop Ring	HOPH-Q4-11	0.01
12.Stop Ring	HOPH-Q4-12	0.30
13.Drive Chuck	HOPH-Q4-13	3.30
14.Drill Bit	HOHP-Q4-14	

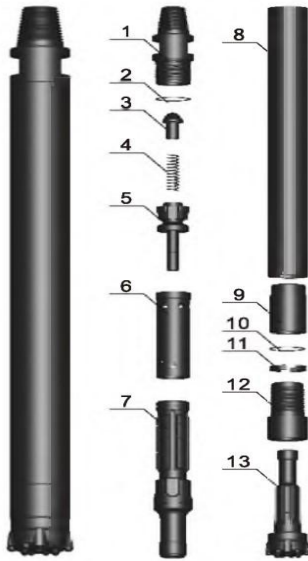
Technical Parameters

Length(without bit)	Weigth(without bit)	External diameter	Bit shank	Hole range	Connection thread
1103mm	42.60kg	99mm	QL40	110mm-130mm	API 2 3/8"Reg
Working pressure	Impact rate at 17bar	Speed recommended	Pull force recommended	Reference air consumption (m3/min)	
10-25bar	28HZ	30-70rpm	8KN	14Bar	24Bar
				7.40	15.00

DTH Drill Bit Design

 Gauge 7 x 14mm, Face 2x14mm,4x14mm	 Gauge 7 x 16mm, Face 2x14mm,4x14mm	 Gauge 8 x 14mm, Face 2x14mm,4x14mm
QL40-115mm-CV	QL40-115mm-CV	QL40-115mm-CV
 Gauge 8 x 14mm, Face 3x13mm,4x14mm	 Gauge 8 x 14mm, Face 7x13mm	 Gauge 8 x 14mm, Face 7x14mm
QL40-125mm-CV	QL40-127mm-FF	QL40-130mm-FF

4 INCH QL40W DTH HAMMER, BIT WITHOUT BLOW TUBE/FOOT VALVE



Part Name	Part Number	Weight(kg)
1.Top Sub	HOPH-Q4-1W	6.00
2."O"Ring of Top sub	HOPH-Q4-2W	0.01
3.Check Valve	HOPH-Q4-3W	0.50
4.Spring	HOPH-Q4-4W	0.05
5.Air Distributor	HOPH-Q4-5W	1.30
6.Internal Cylinder	HOPH-Q4-6W	1.90
7.Piston	HOPH-Q4-7W	7.80
8.External Cylinder	HOPH-Q4-8W	14.60
9.Guided Sleeve	HOPH-Q4-9W	1.20
10."O"Ring of Stop Ring	HOPH-Q4-10W	0.01
11.Stop Ring	HOPH-Q4-11W	0.20
12.Drive Chuck	HOPH-Q4-12W	3.40
13.Drill Bit	HOPH-Q4-13W	

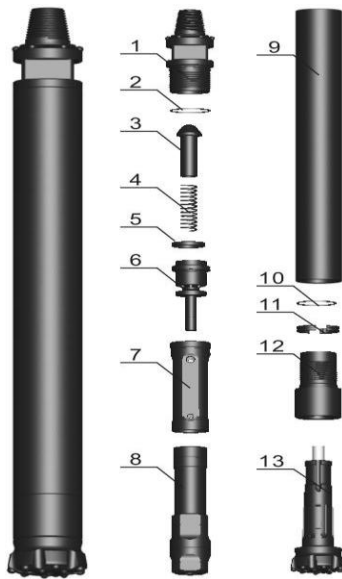
Technical Parameters

Length(without bit)	Weigth(without bit)	External diameter	Bit shank	Hole range	Connection thread
1070mm	40.00kg	99mm	QL40	110mm-130mm	API 2 3/8"Reg
Working pressure	Impact rate at 17bar	Speed recommended	Pull force recommended	Reference air consumption (m3/min)	
10-25bar	28HZ	30-70rpm	8KN	14Bar	24Bar
				7.40	15.00

DTH Drill Bit Design

<p>Gauge 7 x 14mm, Face 2x14mm,4x14mm</p>	<p>Gauge 7 x 16mm, Face 2x14mm,4x14mm</p>	<p>Gauge 8 x 14mm, Face 2x14mm,4x14mm</p>
QL40W-115mm-CV	QL40W-115mm-CV	QL40W-115mm-CV
<p>Gauge 8 x 14mm, Face 3x13mm,4x14mm</p>	<p>Gauge 8 x 14mm, Face 7x13mm</p>	<p>Gauge 8 x 14mm, Face 7x14mm</p>
QL40W-125mm-CV	QL40W-127mm-FF	QL40W-130mm-FF

4 INCH SD4 DTH HAMMER, BIT WITH BLOW TUBE/FOOT VALVE



Part Name	Part Number	Weight(kg)
1.Top Sub	HOPH-SD4-1	7.00
2."O"Ring of Top sub	HOPH-SD4-2	0.01
3.Check Valve	HOPH-SD4-3	0.42
4.Spring	HOPH-SD4-4	0.04
5.Compression Buffer	HOPH-SD4-5	0.04
6.Air Distributor	HOPH-SD4-6	2.20
7.Internal Cylinder	HOPH-SD4-7	2.30
8.Piston	HOPH-SD4-8	9.00
9.External Cylinder	HOPH-SD4-9	15.6
10."O"Ring of Stop Ring	HOPH-SD4-10	0.01
11.Stop Ring	HOPH-SD4-11	0.20
12.Drive Chuck	HOPH-SD4-12	4.10
13.Drill Bit	HOPH-SD4-13	

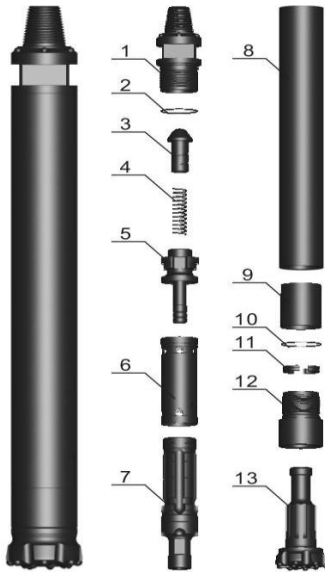
Technical Parameters

Length(without bit)	Weigth(without bit)	External diameter	Bit shank	Hole range	Connection thread
1083mm	40.90kg	99mm	SD4	110mm-130mm	API 2 3/8"Reg
Working pressure	Impact rate at 17bar	Speed recommended	Pull force recommended	Reference air consumption (m3/min)	
10-25bar	28HZ	30-70rpm	8KN	14Bar	24Bar
				7.4	15.0

DTH Drill Bit Design

 Gauge 7 x 14mm, Face 2x14mm,4x14mm SD4-115mm-CV	 Gauge 7 x 16mm, Face 2x14mm,4x14mm SD4-115mm-CV	 Gauge 8 x 14mm, Face 2x14mm,4x14mm SD4-115mm-CV
 Gauge 8 x 14mm, Face 3x13mm,4x14mm SD4-125mm-CV	 Gauge 8 x 14mm, Face 7x13mm SD4-127mm-FF	 Gauge 8 x 14mm, Face 7x14mm SD4-130mm-FF

4 INCH MISSION40W DTH HAMMER, BIT WITHOUT BLOW TUBE/FOOT VALVE



Part Name	Part Number	Weight(kg)
1.Top Sub	HOPH-M4-1	7.00
2."O"Ring of Top sub	HOPH-M4-2	0.01
3.Check Valve	HOPH-M4-3	0.42
4.Spring	HOPH-M4-4	0.04
5.Air Distributor	HOPH-M4-5	1.20
6.Internal Cylinder	HOPH-M4-6	1.80
7.Piston	HOPH-M4-7	8.50
8.External Cylinder	HOPH-M4-8	14.70
9.Guided Sleeve	HOPH-M4-9	1.80
10."O"Ring of Stop Ring	HOPH-M4-10	0.01
11.Stop Ring	HOPH-M4-11	0.30
12.Drive Chuck	HOPH-M4-12	3.80
13.Drill Bit	HOPH-M4-13	

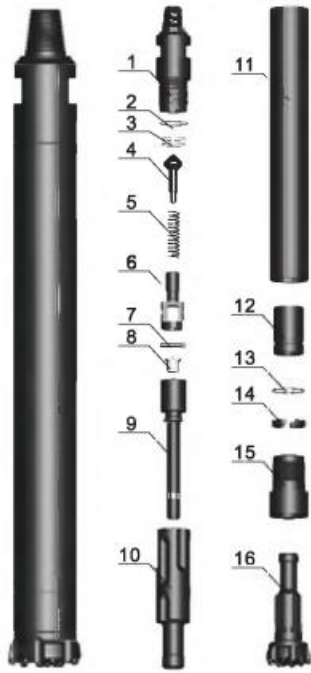
Technical Parameters

Length(without bit)	Weigth(without bit)	External diameter	Bit shank	Hole range	Connection thread
1005mm	40.00kg	99mm	MISSION40	110mm-130mm	API 2 3/8"Reg
Working pressure	Impact rate at 17bar	Speed recommended	Pull force recommended	Reference air consumption (m3/min)	
10-25bar	30HZ	30-70rpm	7KN	14Bar	24Bar
				7.00	14.20

DTH Drill Bit Design

<p>Gauge 7 x 14mm, Face 2x14mm,4x14mm</p>	<p>Gauge 7 x 16mm, Face 2x14mm,4x14mm</p>	<p>Gauge 8 x 14mm, Face 2x14mm,4x14mm</p>
MISSION40W-115mm-CV	MISSION40W-115mm-CV	MISSION40W-115mm-CV
<p>Gauge 8 x 14mm, Face 3x13mm,4x14mm</p>	<p>Gauge 8 x 14mm, Face 7x13mm</p>	<p>Gauge 8 x 14mm, Face 7x14mm</p>
MISSION40W-125mm-CV	MISSION40W-127mm-FF	MISSION40W-130mm-FF

4 INCH MISSION40WI DTH HAMMER, BIT WITHOUT BLOW TUBE/FOOT VALVE AND INTERNAL CYLINDER



Part Name	Part Number	Weight(kg)
1.Top Sub	HOPH-M4-1WI	8.90
2."O"Ring of Top sub(outer)	HOPH-M4-2WI	0.01
3."O"Ring of Top sub(outer)	HOPH-M4-3WI	0.01
4.Check Valve	HOPH-M4-4WI	0.10
5.Spring	HOPH-M4-5WI	0.02
6.Base of Check Valve	HOPH-M4-6WI	0.27
7.Pin	HOPH-M4-7WI	0.01
8.Plunger	HOPH-M4-8WI	0.01
9.Air Distributor	HOPH-M4-9WI	0.67
10.Piston	HOPH-M4-10WI	7.32
11.External Cylinder	HOPH-M4-11WI	15.70
12.Guided Sleeve	HOPH-M4-12WI	2.56
13."O"Ring of Stop Ring	HOPH-M4-13WI	0.01
14.Stop Ring	HOPH-M4-14WI	0.25
15.Drive Chuck	HOPH-M4-15WI	3.28
16.Drill Bit	HOPH-M4-16WI	

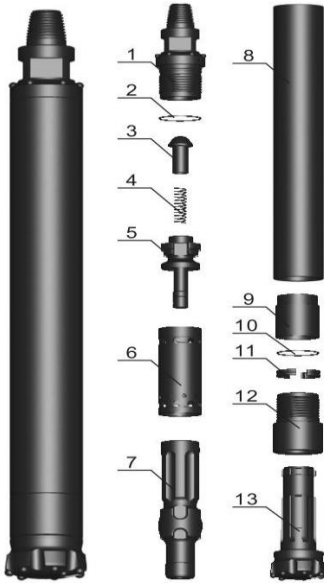
Technical Parameters

Length(without bit)	Weigth(without bit)	External diameter	Bit shank	Hole range	Connection thread
985mm	39.00kg	100mm	MISSION40	110mm-130mm	API 2 3/8"Reg
Working pressure	Impact rate at 17bar	Speed recommended	Pull force recommended	Reference air consumption (m3/min)	
10-25bar	35HZ	30-70rpm	7kN	14Bar	24Bar
				6.50	13.50

DTH Drill Bit Design

<p>Gauge 7 x 14mm, Face 2x14mm,4x14mm</p>	<p>Gauge 7 x 16mm, Face 2x14mm,4x14mm</p>	<p>Gauge 8 x 14mm, Face 2x14mm,4x14mm</p>
MISSION40WI-115mm-CV	MISSION40WI-115mm-CV	MISSION40WI-115mm-CV
<p>Gauge 8 x 14mm, Face 3x13mm,4x14mm</p>	<p>Gauge 8 x 14mm, Face 7x13mm</p>	<p>Gauge 8 x 14mm, Face 7x14mm</p>
MISSION40WI-125mm-CV	MISSION40WI-127mm-FF	MISSION40WI-130mm-FF

5 INCH COP54SW DTH HAMMER, BIT WITHOUT BLOW TUBE/FOOT VALVE



Part Name	Part Number	Weight(kg)
1.Top Sub	HOPH-C5-1SW	10.00
2."O"Ring of Top sub	HOPH-C5-2SW	0.01
3.Check Valve	HOPH-C5-3SW	0.70
4.Spring	HOPH-C5-4SW	0.10
5.Air Distributor	HOPH-C5-5SW	1.80
6.Internal Cylinder	HOPH-C5-6SW	3.15
7.Piston	HOPH-C5-7SW	11.80
8.External Cylinder	HOPH-C5-8SW	21.45
9.Guided Sleeve	HOPH-C5-9SW	1.75
10."O"Ring of Stop Ring	HOPH-C5-10SW	0.01
11.Stop Ring	HOPH-C5-11SW	0.45
12.Drive Chuck	HOPH-C5-12SW	5.05
13.Drill Bit	HOPH-C5-13SW	

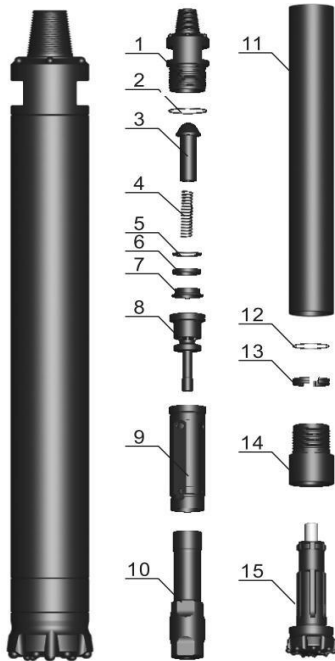
Technical Parameters

Length(without bit)	Weigth(without bit)	External diameter	Bit shank	Hole range	Connection thread
1110mm	56.30kg	116mm	COP54 DHD350R	127mm-146mm	API 2 3/8"Reg API 3 1/2"Reg
Working pressure	Impact rate at 17bar	Speed recommended	Pull force recommended	Reference air consumption (m3/min)	
10-25bar	30HZ	30-60rpm	9KN	14Bar	24Bar
				10.80	20.07

DTH Drill Bit Design

 Gauge 7 x 16mm, Face 3x14mm,4x14mm COP54SW-127mm-CV	 Gauge 7 x 16mm, Face 3x14mm,4x14mm COP54SW-130mm-CV	 Gauge 7 x 16mm, Face 3x14mm,4x14mm COP54SW-132mm-CV
 Gauge 7 x 18mm, Face 3x14mm,4x14mm COP54SW-135mm-CV	 Gauge 8 x 16mm, Face 7x14mm COP54SW-127mm-FF	 Gauge 8 x 16mm, Face 7x14mm COP54SW-130mm-FF

5 INCH COP54 DTH HAMMER, BIT WITH BLOW TUBE/FOOT VALVE









Part Name	Part Number	Weight(kg)
1.Top Sub	HOPH-C5-1	14.7
2."O"Ring of Top sub	HOPH-C5-2	0.01
3.Check Valve	HOPH-C5-3	1.00
4.Spring	HOPH-C5-4	0.04
5.Breakout Ring	HOPH-C5-5	0.10
6.Compression Buffer	HOPH-C5-6	0.06
7.Base of Compression Buffer	HOPH-C5-7	0.40
8.Air Distributor	HOPH-C5-8	3.70
9.Internal Cylinder	HOPH-C5-9	4.50
10.Piston	HOPH-C5-10	15.5
11.External Cylinder	HOPH-C5-11	29.96
12."O"Ring of Stop Ring	HOPH-C5-12	0.01
13.Stop Ring	HOPH-C5-13	0.30
14.Drive Chuck	HOPH-C5-14	6.40
15.Drill Bit	HOPH-C5-15	

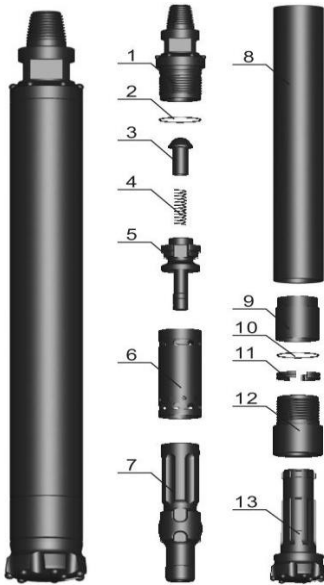
Technical Parameters

Length(without bit)	Weigth(without bit)	External diameter	Bit shank	Hole range	Connection thread
1214mm	77.00kg	125mm	COP54 DHD350R	135mm-152mm	API 2 3/8"Reg API 3 1/2"Reg
Working pressure	Impact rate at 17bar	Speed recommended	Pull force recommended	Reference air consumption (m3/min)	
10-25bar	26HZ	30-60rpm	9KN	14Bar	24Bar
				12.00	22.30

DTH Drill Bit Design

 Gauge 7 x 18mm, Face 3x14mm,4x15mm COP54-140mm-CV	 Gauge 8 x 16mm, Face 8x14mm COP54-140mm-FF	 Gauge 8 x 18mm, Face 8x15mm COP54-146mm-FF
 Gauge 8 x 18mm, Face 4x15mm,3x14mm COP54-146mm-CC	 Gauge 8 x 18mm, Face 8x15mm COP54-152mm-FF	 Gauge 8 x 18mm, Face 4x16mm,4x14mm COP54-152mm-CC

5 INCH COP54W DTH HAMMER, BIT WITHOUT BLOW TUBE/FOOT VALVE



Part Name	Part Number	Weight(kg)
1.Top Sub	HOPH-C5-1W	13.7
2."O"Ring of Top sub	HOPH-C5-2W	0.02
3.Check Valve	HOPH-C5-3W	0.70
4.Spring	HOPH-C5-4W	0.10
5.Air Distributor	HOPH-C5-5W	2.10
6.Internal Cylinder	HOPH-C5-6W	3.45
7.Piston	HOPH-C5-7W	15.7
8.External Cylinder	HOPH-C5-8W	22.30
9.Guided Sleeve	HOPH-C5-9W	2.60
10."O"Ring of Stop Ring	HOPH-C5-10W	0.01
11.Stop Ring	HOPH-C5-11W	0.55
12.Drive Chuck	HOPH-C5-12W	6.65
13.Drill Bit	HOPH-C5-13W	

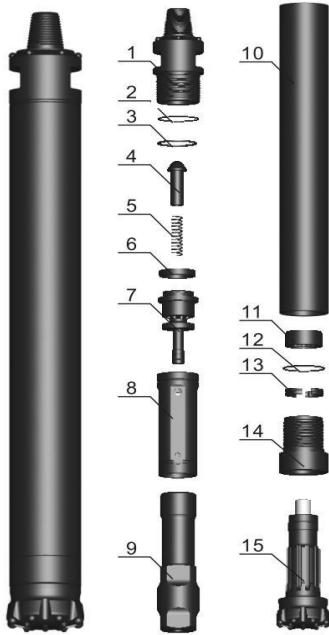
Technical Parameters

Length(without bit)	Weigth(without bit)	External diameter	Bit shank	Hole range	Connection thread
1106mm	65.20kg	125mm	COP54 DHD350R	135mm-152mm	API 2 3/8"Reg API 3 1/2"Reg
Working pressure	Impact rate at 17bar	Speed recommended	Pull force recommended	Reference air consumption (m3/min)	
10-25bar	29HZ	30-60rpm	9KN	14Bar	24Bar
				10.80	20.07

DTH Drill Bit Design

 Gauge 7 x 18mm, Face 3x14mm,4x15mm COP54W-140mm-CV	 Gauge 8 x 16mm, Face 8x14mm COP54W-140mm-FF	 Gauge 8 x 18mm, Face 8x15mm COP54W-146mm-FF
 Gauge 8 x 18mm, Face 4x15mm,3x14mm COP54W-146mm-CC	 Gauge 8 x 18mm, Face 8x15mm COP54W-152mm-FF	 Gauge 8 x 18mm, Face 4x16mm,4x14mm COP54W-152mm-CC

5 INCH QL50 DTH HAMMER, BIT WITH BLOW TUBE/FOOT VALVE



Part Name	Part Number	Weight(kg)
1.Top Sub	HOPH-Q5-1	13.7
2."O"Ring of Top sub	HOPH-Q5-2	0.02
3.Breakout Ring	HOPH-Q5-3	0.15
4.Check Valve	HOPH-Q5-4	1.00
5.Spring	HOPH-Q5-5	0.10
6.Compression Buffer	HOPH-Q5-6	0.10
7.Air Distributor	HOPH-Q5-7	3.50
8.Internal Cylinder	HOPH-Q5-8	4.20
9.Piston	HOPH-Q5-9	19.0
10.External Cylinder	HOPH-Q5-10	24.6
11.Guided Sleeve	HOPH-Q5-11	0.90
12."O"Ring of Stop Ring	HOPH-Q5-12	0.01
13.Stop Ring	HOPH-Q5-13	0.40
14.Drive Chuck	HOPH-Q5-14	4.60
15.Drill Bit	HOPH-Q5-15	

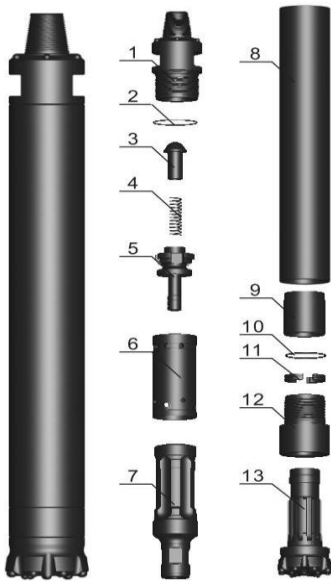
Technical Parameters

Length(without bit)	Weigth(without bit)	External diameter	Bit shank	Hole range	Connection thread
1156mm	73.00kg	125mm	QL50	135mm-152mm	API 2 3/8"Reg API 3 1/2"Reg
Working pressure	Impact rate at 17bar	Speed recommended	Pull force recommended	Reference air consumption (m3/min)	
10-25bar	26HZ	30-60rpm	9KN	14Bar	24Bar
				12.00	22.30

DTH Drill Bit Design

 Gauge 7 x 18mm,Face 3x14mm,4x15mm	 Gauge 8 x 16mm, Face 8x14mm	 Gauge 8 x 18mm, Face 8x15mm
QL50-140mm-CV	QL50-140mm-FF	QL50-146mm-FF
 Gauge 8 x 18mm, Face 4x15mm,3x14mm	 Gauge 8 x 18mm, Face 8x15mm	 Gauge 8 x 18mm, Face 4x16mm,4x14mm
QL50-146mm-CC	QL50-152mm-FF	QL50-152mm-CC

5 INCH QL50W DTH HAMMER, BIT WITHOUT BLOW TUBE/FOOT VALVE



Part Name	Part Number	Weight(kg)
1.Top Sub	HOPH-Q5-1W	13.75
2."O"Ring of Top sub	HOPH-Q5-2W	0.015
3.Check Valve	HOPH-Q5-3W	0.70
4.Spring	HOPH-Q5-4W	0.10
5.Air Distributor	HOPH-Q5-5W	2.00
6.Internal Cylinder	HOPH-Q5-6W	2.80
7.Piston	HOPH-Q5-7W	15.65
8.External Cylinder	HOPH-Q5-8W	22.03
9.Guided Sleeve	HOPH-Q5-9W	3.00
10."O"Ring of Stop Ring	HOPH-Q5-10W	0.01
11.Stop Ring	HOPH-Q5-11W	0.40
12.Drive Chuck	HOPH-Q5-12W	4.50
13.Drill Bit	HOPH-Q5-13W	

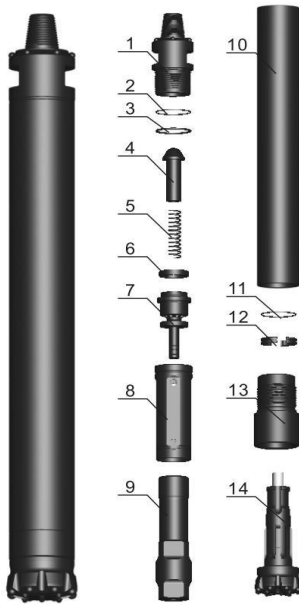
Technical Parameters

Length(without bit)	Weigth(without bit)	External diameter	Bit shank	Hole range	Connection thread
1090mm	67.00kg	125mm	QL50	135mm-152mm	API 2 3/8"Reg API 3 1/2"Reg
Working pressure	Impact rate at 17bar	Speed recommended	Pull force recommended	Reference air consumption (m3/min)	
10-25bar	29HZ	30-60rpm	9KN	14Bar	24Bar
				10.80	20.07

DTH Drill Bit Design

 Gauge 7 x 18mm,Face 3x14mm,4x15mm	 Gauge 8 x 16mm, Face 8x14mm	 Gauge 8 x 18mm, Face 8x15mm
QL50W-140mm-CV	QL50W-140mm-FF	QL50W-146mm-FF
 Gauge 8 x 18mm, Face 4x15mm,3x14mm	 Gauge 8 x 18mm, Face 8x15mm	 Gauge 8 x 18mm, Face 4x16mm,4x14mm
QL50W-146mm-CC	QL50W-152mm-FF	QL50W-152mm-CC

5 INCH SD5 DTH HAMMER, BIT WITH BLOW TUBE/FOOT VALVE



Part Name	Part Number	Weight(kg)
1.Top Sub	HOPH-SD5-1	13.70
2."O"Ring of Top sub	HOPH-SD5-2	0.01
3.Breakout Ring	HOPH-SD5-3	0.25
4.Check Valve	HOPH-SD5-4	1.00
5.Spring	HOPH-SD5-5	0.10
6.Compression Buffer	HOPH-SD5-6	0.05
7.Air Distributor	HOPH-SD5-7	3.50
8.Internal Cylinder	HOPH-SD5-8	4.20
9.Piston	HOPH-SD5-9	15.50
10.External Cylinder	HOPH-SD5-10	25.0
11."O"Ring of Stop Ring	HOPH-SD5-11	0.01
12.Stop Ring	HOPH-SD5-12	0.50
13.Drive Chuck	HOPH-SD5-13	7.50
14.Drill Bit		

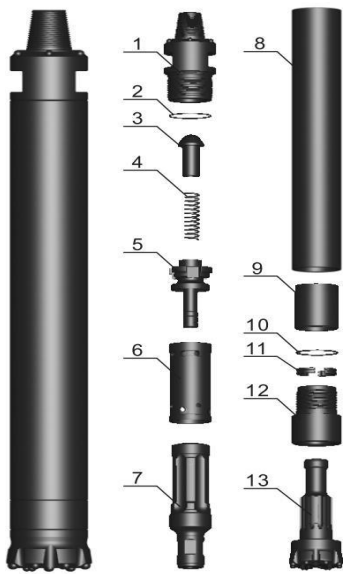
Technical Parameters

Length(without bit)	Weigth(without bit)	External diameter	Bit shank	Hole range	Connection thread
1175mm	72.50kg	125mm	SD5	135mm-152mm	API 2 3/8"Reg API 3 1/2"Reg
Working pressure	Impact rate at 17bar	Speed recommended	Pull force recommended	Reference air consumption (m3/min)	
10-25bar	26HZ	30-60rpm	9KN	14Bar	24Bar
				12.00	22.30

DTH Drill Bit Design

Gauge 7 x 18mm,Face 3x14mm,4x15mm	Gauge 8 x 16mm, Face 8x14mm	Gauge 8 x 18mm, Face 8x15mm
SD5-140mm-CV	SD5-140mm-FF	SD5-146mm-FF
Gauge 8 x 18mm, Face 4x15mm,3x14mm	Gauge 8 x 18mm, Face 8x15mm	Gauge 8 x 18mm, Face 4x16mm,4x14mm
SD5-146mm-CC	SD5-152mm-FF	SD5-152mm-CC

5 INCH SD5W DTH HAMMER, BIT WITHOUT BLOW TUBE/FOOT VALVE



Part Name	Part Number	Weight(kg)
1.Top Sub	HOPH-SD5-1W	15.00
2."O"Ring of Top sub	HOPH-SD5-2W	0.01
3.Check Valve	HOPH-SD5-3W	0.33
4.Spring	HOPH-SD5-4W	0.10
5.Air Distributor	HOPH-SD5-5W	2.00
6.Internal Cylinder	HOPH-SD5-6W	2.80
7.Piston	HOPH-SD5-7W	15.70
8.External Cylinder	HOPH-SD5-8W	25.00
9.Guided Sleeve	HOPH-SD5-9W	1.30
10."O"Ring of Stop Ring	HOPH-SD5-10W	0.01
11.Stop Ring	HOPH-SD5-11W	0.20
12.Drive Chuck	HOPH-SD5-12W	8.00
13.Drill bit	HOPH-SD5-13W	

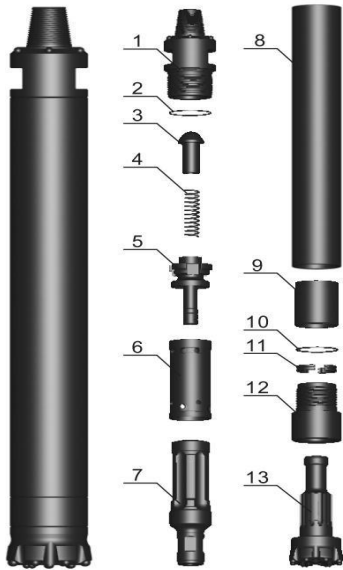
Technical Parameters

Length(without bit)	Weigth(without bit)	External diameter	Bit shank	Hole range	Connection thread
1090mm	70.00kg	125mm	MISSION50	135mm-152mm	API 2 3/8"Reg API 3 1/2"Reg
Working pressure	Impact rate at 17bar	Speed recommended	Pull force recommended	Reference air consumption (m3/min)	
10-25bar	29HZ	30-60rpm	9KN	14Bar	24Bar
				10.80	20.07

DTH Drill Bit Design

 Gauge 7 x 18mm,Face 3x14mm,4x15mm	 Gauge 8 x 16mm, Face 8x14mm	 Gauge 8 x 18mm, Face 8x15mm
SD5W-140mm-CV	SD5W-140mm-FF	SD5W-146mm-FF
 Gauge 8 x 18mm, Face 4x15mm,3x14mm	 Gauge 8 x 18mm, Face 8x15mm	 Gauge 8 x 18mm, Face 4x16mm,4x14mm
SD5W-146mm-CC	SD5W-152mm-FF	SD5W-152mm-CC

5 INCH MISSION50W DTH HAMMER, BIT WITHOUT BLOW TUBE/FOOT VALVE



Part Name	Part Number	Weight(kg)
1.Top Sub	HOPH-M5-1W	13.70
2."O"Ring of Top sub	HOPH-M5-2W	0.01
3.Check Valve	HOPH-M5-3W	0.70
4.Spring	HOPH-M5-4W	0.10
5.Air Distributor	HOPH-M5-5W	2.00
6.Internal Cylinder	HOPH-M5-6W	2.80
7.Piston	HOPH-M5-7W	15.70
8.External Cylinder	HOPH-M5-8W	22.30
9.Guided Sleeve	HOPH-M5-9W	3.00
10."O"Ring of Stop Ring	HOPH-M5-10W	0.01
11.Stop Ring	HOPH-M5-11W	0.70
12 Drive Chuck	HOPH-M5-12W	6.95
13.Drill bit	HOPH-M5-13W	

Technical Parameters

Length(without bit)	Weigth(without bit)	External diameter	Bit shank	Hole range	Connection thread
1106mm	65.70kg	125mm	MISSION50	135mm-152mm	API 2 3/8"Reg API 3 1/2"Reg
Working pressure	Impact rate at 17bar	Speed recommended	Pull force recommended	Reference air consumption (m3/min)	
10-25bar	29HZ	30-60rpm	9KN	14Bar	24Bar
				10.80	20.07

DTH Drill Bit Design

<p>Gauge 7 x 18mm,Face 3x14mm,4x15mm</p>	<p>Gauge 8 x 16mm, Face 8x14mm</p>	<p>Gauge 8 x 18mm, Face 8x15mm</p>
MISSION50W-140mm-CV	MISSION50W-140mm-FF	MISSION50W-146mm-FF
<p>Gauge 8 x 18mm, Face 4x15mm,3x14mm</p>	<p>Gauge 8 x 18mm, Face 8x15mm</p>	<p>Gauge 8 x 18mm, Face 4x16mm,4x14mm</p>
MISSION50W-146mm-CC	MISSION50W-152mm-FF	MISSION50W-152mm-CC

5 INCH MISSION50WI DTH HAMMER, BIT WITHOUT BLOW TUBE/FOOT VALVE AND INTERNAL CYLINDER



Part Name	Part Number	Weight(kg)
1.Top Sub	HOPH-M5-1WI	16.50
2."O"Ring of Top sub(outer)	HOPH-M5-2WI	0.01
3."O"Ring of Top sub(outer)	HOPH-M5-3WI	0.01
4.Check Valve	HOPH-M5-4WI	0.20
5.Spring	HOPH-M5-5WI	0.05
6.Base of Check Valve	HOPH-M5-6WI	0.60
7.Pin	HOPH-M5-7WI	0.20
8.Plunger	HOPH-M5-8WI	0.05
9.Distributor Tube	HOPH-M5-9WI	1.20
10.Piston	HOPH-M5-10WI	12.95
11.External Cylinder	HOPH-M5-11WI	23.40
12.Guided Sleeve	HOPH-M5-12WI	3.40
13.Retaining Ring	HOPH-M5-13WI	0.05
14."O"Ring of Stop Ring	HOPH-M5-14WI	0.01
15.Stop Ring	HOPH-M5-15WI	0.60
16.Drive Chuck	HOPH-M5-16WI	6.20
17.Drill Bit	HOPH-M5-17WI	

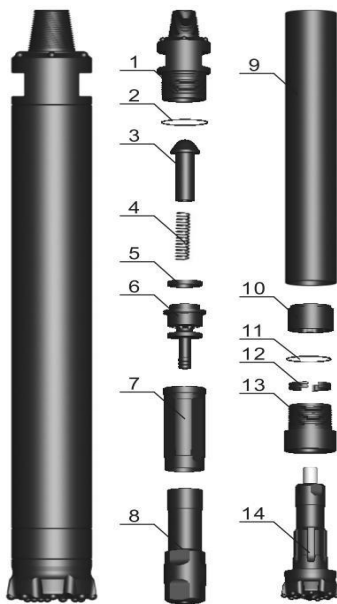
Technical Parameters

Length(without bit)	Weigth(without bit)	External diameter	Bit shank	Hole range	Connection thread
1020mm	65.80kg	126mm	MISSION50	135mm-152mm	API 2 3/8"Reg
Working pressure	Impact rate at 17bar	Speed recommended	Pull force recommended	Reference air consumption (m3/min)	
10-25bar	32HZ	30-60rpm	8kN	14Bar	24Bar
				9.60	17.84

DTH Drill Bit Design

MISSION50WI-140mm-CV	MISSION50WI-140mm-FF	MISSION50WI-146mm-FF
MISSION50WI-146mm-CC	MISSION50WI-152mm-FF	MISSION50WI-152mm-CC

6 INCH COP64 DTH HAMMER, BIT WITH BLOW TUBE/FOOT VALVE



Part Name	Part Number	Weight(kg)
1.Top Sub	HOPH-C6-1	21.10
2."O"Ring of Top sub	HOPH-C6-2	0.02
3.Check Valve	HOPH-C6-3	1.00
4.Spring	HOPH-C6-4	0.04
5.Compression Buffer	HOPH-C6-5	0.08
6.Air Distributor	HOPH-C6-6	5.15
7.Internal Cylinder	HOPH-C6-7	5.10
8.Piston	HOPH-C6-8	23.35
9.External Cylinder	HOPH-C6-9	44.70
10.Guided Sleeve	HOPH-C6-10	2.80
11."O"Ring of Stop Ring	HOPH-C6-11	0.02
12.Stop Ring	HOPH-C6-12	0.85
13.Drive Chuck	HOPH-C6-13	8.15
14.Drill Bit	HOHP-C6-14	

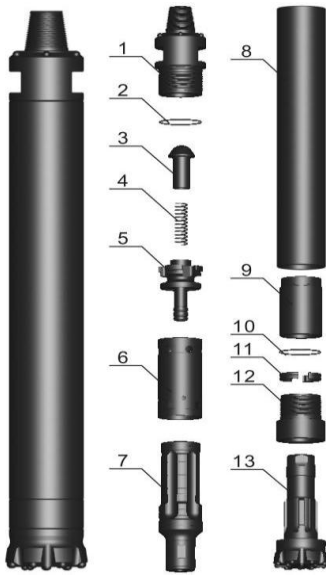
Technical Parameters

Length(without bit)	Weigth(without bit)	External diameter	Bit shank	Hole range	Connection thread
1264mm	112.36kg	148mm	COP64 DHD360	165mm-190mm	API 3 1/2"Reg
Working pressure	Impact rate at 17bar	Speed recommended	Pull force recommended	Reference air consumption (m3/min)	
10-25bar	25HZ	25-50rpm	11KN	14Bar	24Bar
				15.80	27.50

DTH Drill Bit Design

COP64-165mm-FF	COP64-165mm-CV	COP64-165mm-CC
COP64-171mm-CC	COP64-178mm-CC	COP64-190mm-CC

6 INCH COP64W DTH HAMMER, BIT WITHOUT BLOW TUBE/FOOT VALVE



Part Name	Part Number	Weight(kg)
1.Top Sub	HOPH-C6-1W	21.10
2."O"Ring of Top sub	HOPH-C6-2W	0.02
3.Check Valve	HOPH-C6-3W	0.70
4.Spring	HOPH-C6-4W	0.10
5.Air Distributor	HOPH-C6-5W	3.50
6.Internal Cylinder	HOPH-C6-6W	5.30
7.Piston	HOPH-C6-7W	24.10
8.External Cylinder	HOPH-C6-8W	40.30
9.Guided Sleeve	HOPH-C6-9W	6.50
10."O"Ring of Top Ring	HOPH-C6-10W	0.01
11.Stop Ring	HOPH-C6-11W	0.85
12 Drive Chuck	HOPH-C6-12W	8.15
13.Drill Bit	HOPH-C6-13W	

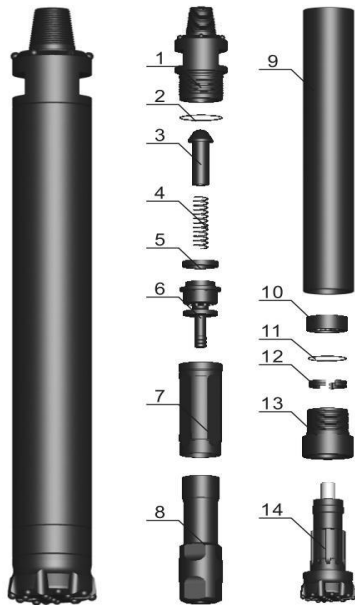
Technical Parameters

Length(without bit)	Weigth(without bit)	External diameter	Bit shank	Hole range	Connection thread
1238mm	112.10kg	148mm	COP64 DHD360	165mm-190mm	API 3 1/2"Reg
Working pressure	Impact rate at 17bar	Speed recommended	Pull force recommended	Reference air consumption (m3/min)	
10-25bar	27HZ	25-50rpm	9KN	14Bar	24Bar

DTH Drill Bit Design

 Gauge 8 x 18mm, Face 8x16mm	 Gauge 8 x 18mm, Face 4x16mm,4x16mm	 Gauge 8 x 18mm, Face 4x16mm,4x15mm
COP64W-165mm-FF	COP64W-165mm-CV	COP64W-165mm-CC
 Gauge 8 x 18mm, Face 6x16mm,4x16mm	 Gauge 8 x 18mm, Face 6x16mm,4x16mm	 Gauge 10 x 18mm, Face 8x16mm,5x16mm
COP64W-171mm-CC	COP64W-178mm-CC	COP64W-190mm-CC

6 INCH QL60 DTH HAMMER, BIT WITH BLOW TUBE/FOOT VALVE



Part Name	Part Number	Weight(kg)
1.Top Sub	HOPH-Q6-1	21.10
2."O"Ring of Top sub	HOPH-Q6-2	0.02
3.Check Valve	HOPH-Q6-3	1.00
4.Spring	HOPH-Q6-4	0.10
5.Compression Buffer	HOPH-Q6-5	0.10
6.Air Distributor	HOPH-Q6-6	6.00
7.Internal Cylinder	HOPH-Q6-7	5.00
8.Piston	HOPH-Q6-8	23.50
9.External Cylinder	HOPH-Q6-9	31.00
10.Guided Sleeve	HOPH-Q6-10	1.00
11."O"Ring of Stop Ring	HOPH-Q6-11	0.02
12.Stop Ring	HOPH-Q6-12	0.60
13.Drive Chuck	HOPH-Q6-13	5.40
14.Drill Bit	HOHP-Q6-14	

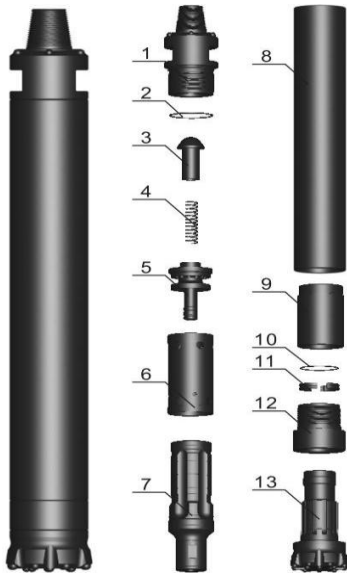
Technical Parameters

Length(without bit)	Weigth(without bit)	External diameter	Bit shank	Hole range	Connection thread
1212mm	95.00kg	148mm	QL60	165mm-190mm	API 3 1/2"Reg
Working pressure	Impact rate at 17bar	Speed recommended	Pull force recommended	Reference air consumption (m3/min)	
10-25bar	25HZ	25-50rpm	11kN	14Bar	24Bar
				15.80	27.50

DTH Drill Bit Design

 Gauge 8 x 18mm, Face 8x16mm	 Gauge 8 x 18mm, Face 4x16mm,4x16mm	 Gauge 8 x 18mm, Face 4x16mm,4x15mm
QL60-165mm-FF	QL60-165mm-CV	QL60-165mm-CC
 Gauge 8 x 18mm, Face 6x16mm,4x16mm	 Gauge 8 x 18mm, Face 6x16mm,4x16mm	 Gauge 10 x 18mm, Face 8x16mm,5x16mm
QL60-171mm-CC	QL60-178mm-CC	QL60-190mm-CC

6 INCH QL60W DTH HAMMER, BIT WITHOUT BLOW TUBE/FOOT VALVE



Part Name	Part Number	Weight(kg)
1.Top Sub	HOPH-Q6-1W	21.10
2."O"Ring of Top sub	HOPH-Q6-2W	0.02
3.Check Valve	HOPH-Q6-3W	0.70
4.Spring	HOPH-Q6-4W	0.10
5.Air Distributor	HOPH-Q6-5W	3.50
6.Internal Cylinder	HOPH-Q6-6W	5.30
7.Piston	HOPH-Q6-7W	24.10
8.External Cylinder	HOPH-Q6-8W	30.00
9.Guided Sleeve	HOPH-Q6-9W	4.00
10."O"Ring of Stop Ring	HOPH-Q6-10W	0.01
11.Stop Ring	HOPH-Q6-11W	0.60
12.Drive Chuck	HOPH-Q6-12W	5.50
13.Drill bit	HOPH-Q6-13W	

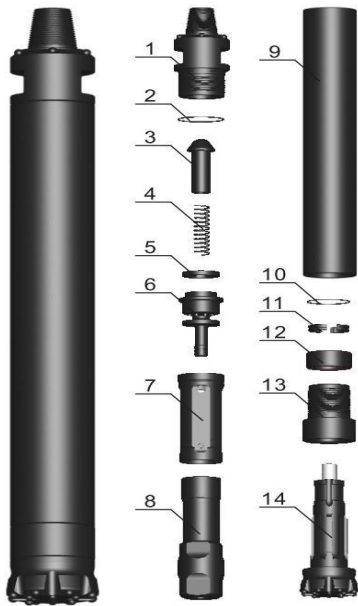
Technical Parameters

Length(without bit)	Weigth(without bit)	External diameter	Bit shank	Hole range	Connection thread
1183mm	92.00kg	148mm	QL60	165mm-190mm	API 3 1/2"Reg
Working pressure	Impact rate at 17bar	Speed recommended	Pull force recommended	Reference air consumption (m3/min)	
10-25bar	27HZ	25-50rpm	9KN	14Bar	20Bar
				14.22	24.75

DTH Drill Bit Design

Gauge 8 x 18mm, Face 8x16mm	Gauge 8 x 18mm, Face 4x16mm,4x16mm	Gauge 8 x 18mm, Face 4x16mm,4x15mm
QL60W-165mm-FF	QL60W-165mm-CV	QL60W-165mm-CC
Gauge 8 x 18mm, Face 6x16mm,4x16mm	Gauge 8 x 18mm, Face 6x16mm,4x16mm	Gauge 10 x 18mm, Face 8x16mm,5x16mm
QL60W-171mm-CC	QL60W-178mm-CC	QL60W-190mm-CC

6 INCH SD6 DTH HAMMER, BIT WITH BLOW TUBE/FOOT VALVE



Part Name	Part Number	Weight(kg)
1.Top Sub	HOPH-SD6-1	20.00
2."O"Ring of Top sub	HOPH-SD6-2	0.01
3.Check Valve	HOPH-SD6-3	1.00
4.Spring	HOPH-SD6-4	0.05
5.Compression Buffer	HOPH-SD6-5	0.10
6.Air Distributor	HOPH-SD6-6	5.00
7.Internal Cylinder	HOPH-SD6-7	5.00
8.Piston	HOPH-SD6-8	24.00
9.External Cylinder	HOPH-SD6-9	35.00
10.Guided Sleeve	HOPH-SD6-10	1.00
11."O"Ring of Stop Ring	HOPH-SD6-11	0.01
12.Stop Ring	HOPH-SD6-12	1.50
13.Drive Chuck	HOPH-SD6-13	4.50
14.Drill Bit	HOHP-SD6-14	

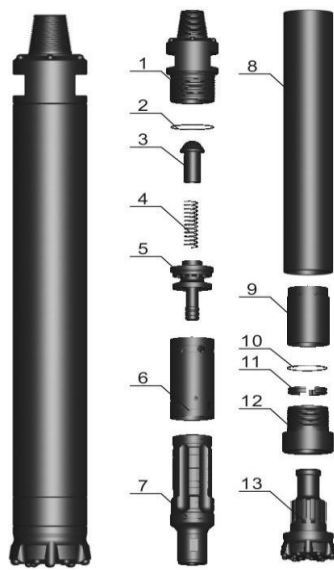
Technical Parameters

Length(without bit)	Weigth(without bit)	External diameter	Bit shank	Hole range	Connection thread
1261mm	100.00kg	142mm	SD6	165mm-190mm	API 3 1/2"Reg
Working pressure	Impact rate at 17bar	Speed recommended	Pull force recommended	Reference air consumption (m3/min)	
10-25bar	25HZ	25-50rpm	11kN	14Bar	24Bar
				15.80	27.50

DTH Drill Bit Design

 Gauge 8 x 18mm, Face 8x16mm	 Gauge 8 x 18mm, Face 4x16mm,4x16mm	 Gauge 8 x 18mm, Face 4x16mm,4x15mm
SD6-165mm-FF	SD6-165mm-CV	SD6-165mm-CC
 Gauge 8 x 18mm, Face 6x16mm,4x16mm	 Gauge 8 x 18mm, Face 6x16mm,4x16mm	 Gauge 10 x 18mm, Face 8x16mm,5x16mm
SD6-171mm-CC	SD6-178mm-CC	SD6-190mm-CC

6 INCH SD6W DTH HAMMER, BIT WITHOUT BLOW TUBE/FOOT VALVE



Part Name	Part Number	Weight(kg)
1.Top Sub	HOPH-SD6-1W	21.00
2."O"Ring of Top sub	HOPH-SD6-2W	0.01
3.Check Valve	HOPH-SD6-3W	0.70
4.Spring	HOPH-SD6-4W	0.10
5.Air Distributor	HOPH-SD6-5W	3.50
6.Internal Cylinder	HOPH-SD6-6W	4.20
7.Piston	HOPH-SD6-7W	24.10
8.External Cylinder	HOPH-SD6-8W	30.00
9.Guided Sleeve	HOPH-SD6-9W	2.50
10."O"Ring of Stop Ring	HOPH-SD6-10W	0.01
11.Stop Ring	HOPH-SD6-11W	0.50
12.Drive Chuck	HOPH-SD6-12W	7.50
13.Drill Bit	HOPH-SD6-13W	

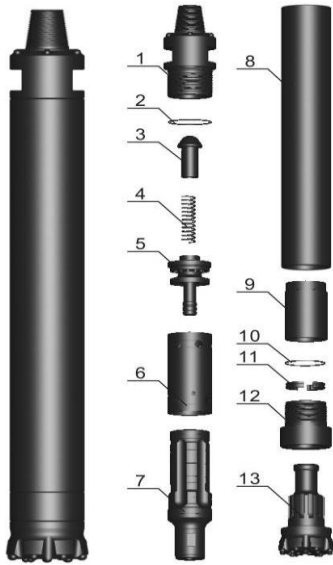
Technical Parameters

Length(without bit)	Weigth(without bit)	External diameter	Bit shank	Hole range	Connection thread
1182mm	94.00kg	146mm	SD6	165mm-190mm	API 3 1/2"Reg
Working pressure	Impact rate at 17bar	Speed recommended	Pull force recommended	Reference air consumption (m3/min)	
10-25bar	25HZ	25-50rpm	11KN	14Bar	24Bar
				15.80	27.50

DTH Drill Bit Design

 Gauge 8 x 18mm, Face 8x16mm	 Gauge 8 x 18mm, Face 4x16mm,4x16mm	 Gauge 8 x 18mm, Face 4x16mm,4x15mm
SD6W-165mm-FF	SD6W-165mm-CV	SD6W-165mm-CC
 Gauge 8 x 18mm, Face 6x16mm,4x16mm	 Gauge 8 x 18mm, Face 6x16mm,4x16mm	 Gauge 10 x 18mm, Face 8x16mm,5x16mm
SD6W-171mm-CC	SD6W-178mm-CC	SD6W-190mm-CC

6 INCH MISSION60W DTH HAMMER, BIT WITHOUT BLOW TUBE/FOOT VALVE



Part Name	Part Number	Weight(kg)
1.Top Sub	HOPH-M6-1	22.00
2."O"Ring of Top sub	HOPH-M6-2	0.01
3.Check Valve	HOPH-M6-3	0.60
4.Spring	HOPH-M6-4	0.10
5.Air Distributor	HOPH-M6-5	3.50
6.Internal Cylinder	HOPH-M6-6	5.30
7.Piston	HOPH-M6-7	24.10
8.External Cylinder	HOPH-M6-8	33.90
9.Guided Sleeve	HOPH-M6-9	5.50
10."O"Ring of Stop Ring	HOPH-M6-10	0.01
11.Stop Ring	HOPH-M6-11	1.10
12.Drive Chuck	HOPH-M6-12	7.00
13.Drill Bit	HOPH-M6-13	

Technical Parameters

Length(without bit)	Weigth(without bit)	External diameter	Bit shank	Hole range	Connection thread
1161mm	103.50kgs	148mm	MISSION60	165mm-190mm	API 3 1/2"Reg
Working pressure	Impact rate at 17bar	Speed recommended	Pull force recommended	Reference air consumption (m3/min)	
10-25bar	27HZ	25-50rpm	9KN	14Bar	20Bar
				14.22	24.75

DTH Drill Bit Design

<p>Gauge 8 x 18mm, Face 8x16mm</p>	<p>Gauge 8 x 18mm, Face 4x16mm,4x16mm</p>	<p>Gauge 8 x 18mm, Face 4x16mm,4x15mm</p>
MISSION60W-165mm-FF	MISSION60W-165mm-CV	MISSION60W-165mm-CC
<p>Gauge 8 x 18mm, Face 6x16mm,4x16mm</p>	<p>Gauge 8 x 18mm, Face 6x16mm,4x16mm</p>	<p>Gauge 10 x 18mm, Face 8x16mm,5x16mm</p>
MISSION60W-171mm-CC	MISSION60W-178mm-CC	MISSION60W-190mm-CC

6 INCH

MISSION60WI DTH HAMMER, BIT WITHOUT BLOW TUBE/FOOT VALVE AND INTERNAL CYLINDER



Part Name	Part Number	Weight(kg)
1.Top Sub	HOPH-M6-1WI	19.00
2."O"Ring of Top sub(outer)	HOPH-M6-2WI	0.01
3."O"Ring of Top sub(outer)	HOPH-M6-3WI	0.01
4.Check Valve	HOPH-M6-4WI	0.25
5.Spring	HOPH-M6-5WI	0.05
6.Base of Check Valve	HOPH-M6-6WI	0.60
7.Pin	HOPH-M6-7WI	0.20
8.Plunger	HOPH-M6-8WI	0.05
9.Distributor Tube	HOPH-M6-9WI	1.35
10.Piston	HOPH-M6-10WI	18.80
11.External Cylinder	HOPH-M6-11WI	32.30
12.Guided Sleeve	HOPH-M6-12WI	6.30
13.Retaining Ring	HOPH-M6-13WI	0.05
14."O"Ring of Stop Ring	HOPH-M6-14WI	0.01
15.Stop Ring	HOPH-M6-15WI	1.00
16.Drive Chuck	HOPH-M6-16WI	6.40
17.Drill Bit	HOPH-M6-17WI	

Technical Parameters

Length(without bit)	Weigth(without bit)	External diameter	Bit shank	Hole range	Connection thread
1030mm	87.00kg	148mm	MISSION60	165mm-190mm	API 3 1/2"Reg
Working pressure	Impact rate at 17bar	Speed recommended	Pull force recommended	Reference air consumption (m3/min)	
10-25bar	30HZ	25-50rpm	9KN	14Bar	24Bar
				12.64	22.00

DTH Drill Bit Design

 Gauge 8 x 18mm, Face 8x16mm	 Gauge 8 x 18mm, Face 4x16mm,4x16mm	 Gauge 8 x 18mm, Face 4x16mm,4x15mm
MISSION60WI-165mm-FF	MISSION60WI-165mm-CV	MISSION60WI-165mm-CC
 Gauge 8 x 18mm, Face 6x16mm,4x16mm	 Gauge 8 x 18mm, Face 6x16mm,4x16mm	 Gauge 10 x 18mm, Face 8x16mm,5x16mm
MISSION60WI-171mm-CC	MISSION60WI-178mm-CC	MISSION60WI-190mm-CC

6 INCH COP66WI DTH HAMMER, BIT WITHOUT BLOW TUBE/FOOT VALVE



Part Name	Part Number	Weight(kg)
1.Top Sub	HOPH-C66-1WI	19.00
2."O"Ring of Top Sub	HOPH-C66-2WI	0.01
3.Check Valve	HOPH-C66-3WI	0.01
4.Spring	HOPH-C66-4WI	0.25
5.Base of Check Valve	HOPH-C66-5WI	0.05
6.AD Tube Washer	HOPH-C66-6WI	0.60
7.Air Distributor(AD)	HOPH-C66-7WI	0.20
8.AD Tube Washer	HOPH-C66-8WI	0.05
9.AD Tube Base	HOPH-C66-9WI	1.35
10."O"Ring of AD Tube Base	HOPH-C66-10WI	18.80
11.Jump Ring	HOPH-C66-11WI	32.30
12.Piston	HOPH-C66-12WI	6.30
13.External Cylinder	HOPH-C66-13WI	0.05
14.Guided Sleeve	HOPH-C66-14WI	0.05
15."O"Ring of Guided Sleeve	HOPH-C66-15WI	0.01
16."O"Ring of Stop Ring	HOPH-C66-16WI	0.01
17.Stop Ring	HOPH-C66-17WI	1.00
18.Drive Chuck	HOPH-C66-18WI	6.40
19.Drill Bit	HOPH-C66-19WI	

Technical Parameters

Length(without bit)	Weigth(without bit)	External diameter	Bit shank	Hole range	Connection thread
896mm	68.00kg	146mm	COP66	165mm-190mm	API 3 1/2"Reg
Working pressure	Impact rate at 17bar	Speed recommended	Pull force recommended	Reference air consumption (m3/min)	
10-25bar	27HZ	25-50rpm	9KN	14Bar	24Bar
				14.22	24.75

DTH Drill Bit Design

 Gauge 8 x 18mm, Face 8x16mm	 Gauge 8 x 18mm, Face 4x16mm,4x16mm	 Gauge 8 x 18mm, Face 4x16mm,4x15mm
COP66WI-165mm-FF	COP66WI-165mm-CV	COP66WI-165mm-CC
 Gauge 8 x 18mm, Face 6x16mm,4x16mm	 Gauge 8 x 18mm, Face 6x16mm,4x16mm	 Gauge 10 x 18mm, Face 8x16mm,5x16mm
COP66WI-171mm-CC	COP66WI-178mm-CC	COP66WI-190mm-CC

7 INCH QL60W DTH HAMMER, BIT WITHOUT BLOW TUBE/FOOT VALVE



Part Name	Part Number	Weight(kg)
1.Top Sub	HOPH-7Q6-1W	28.80
2."O"Ring of Top sub	HOPH-7Q6-2W	0.02
3.Check Valve	HOPH-7Q6-3W	0.60
4.Spring	HOPH-7Q6-4W	0.10
5.Air Distributor	HOPH-7Q6-5W	4.70
6.Internal Cylinder	HOPH-7Q6-6W	4.30
7.Piston	HOPH-7Q6-7W	32.40
8.External Cylinder	HOPH-7Q6-8W	42.00
9.Retaining Ring	HOPH-7Q6-9W	0.20
10.Guided Sleeve	HOPH-7Q6-10W	5.60
11.Retaining Ring	HOPH-7Q6-11W	0.20
12."O"Ring of Stop Ring	HOPH-7Q6-12W	0.02
13.Stop Ring	HOPH-7Q6-13W	1.30
14.Drive Chuck	HOPH-7Q6-14W	12.50
15.Drill Bit	HOPH-7Q6-15W	

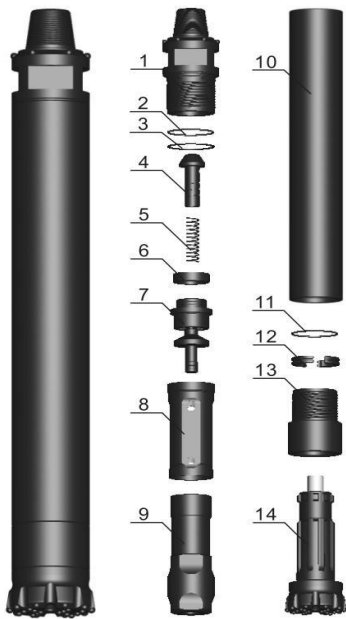
Technical Parameters

Length(without bit)	Weigh(without bit)	External diameter	Bit shank	Hole range	Connection thread
1191mm	131.00kg	165mm	QL60	178mm-203mm	API 3 1/2"Reg
Working pressure	Impact rate at 17bar	Speed recommended	Pull force recommended	Reference air consumption (m3/min)	
10-25bar	25HZ	25-45rpm	14kN	14Bar	20Bar
				14.60	29.50

DTH Drill Bit Design

Gauge 8 x 18mm, Face 6x16mm,4x16mm	Gauge 8 x 18mm, Face 6x16mm,4x16mm	Gauge 10 x 18mm, Face 8x16mm,5x16mm
7QL60W-178mm-CC	7QL60W-185mm-CC	7QL60W-190mm-CC
Gauge 10 x 18mm, Face 8x16mm,5x16mm	Gauge 10 x 18mm, Face 8x16mm,5x16mm	Gauge 10 x 18mm, Face 8x16mm,5x16mm
7QL60W-195mm-CC	7QL60W-200mm-CC	7QL60W-203mm-CC

8 INCH COP84 DTH HAMMER, BIT WITH BLOW TUBE/FOOT VALVE



Part Name	Part Number	Weight(kg)
1.Top Sub	HOPH-C8-1	41.40
2."O"Ring of Top Sub	HOPH-C8-2	0.01
3.Breakout Ring of Top Sub	HOPH-C8-3	0.30
4.Check Valve	HOPH-C8-4	1.30
5.Spring	HOPH-C8-5	0.20
6.Compression Buffer	HOPH-C8-6	0.46
7.Air Distributor	HOPH-C8-7	13.20
8.Internal Cylinder	HOPH-C8-8	8.40
9.Piston	HOPH-C8-9	41.70
10.External Cylinder	HOPH-C8-10	61.40
11."O"Ring of Stop Ring	HOPH-C8-11	0.01
12.Stop Ring	HOPH-C8-12	1.20
13.Drive Chuck	HOPH-C8-13	17.60
14.Drill Bit	HOPH-C8-14	

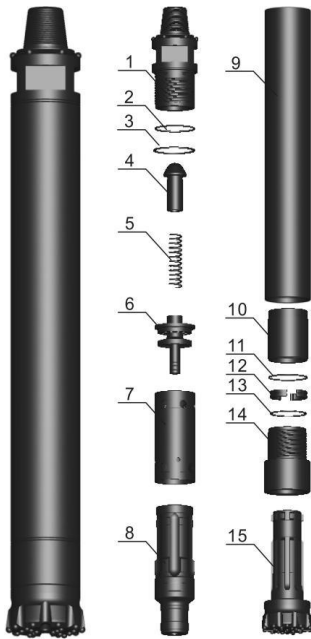
Technical Parameters

Length(without bit)	Weigth(without bit)	External diameter	Bit shank	Hole range	Connection thread
1492mm	188.00kg	180mm	COP84 DHD380	195mm-254mm	API 4 1/2"Reg
Working pressure	Impact rate at 17bar	Speed recommended	Pull force recommended	Reference air consumption (m3/min)	
10-25bar	20HZ	20-45rpm	19kN	14Bar	24Bar
				20.75	43.60

DTH Drill Bit Design

 Gauge 10 x 18mm, Face 8x18mm,5x16mm	 Gauge 10 x 18mm, Face 8x18mm,6x16mm	 Gauge 10 x 18mm, Face 8x18mm,6x16mm
COP84-203mm-CC	COP84-216mm-CC	COP84-219mm-CC
 Gauge 12 x 18mm, Face 12x16mm,7x16mm	 Gauge 12 x 18mm, Face 12x16mm,7x16mm	 Gauge 12 x 19mm, Face 12x16mm,8x16mm
COP84-229mm-CC	COP84-235mm-CC	COP84-254mm-CC

8 INCH COP84W DTH HAMMER, BIT WITHOUT BLOW TUBE/FOOT VALVE



Part Name	Part Number	Weight(kg)
1.Top Sub	HOPH-C8-1W	34.60
2."O"Ring of Top Sub	HOPH-C8-2W	0.01
3.Breakout Ring of Top Sub	HOPH-C8-3W	0.01
4.Check Valve	HOPH-C8-4W	0.90
5.Spring	HOPH-C8-5W	0.20
6.Air Distributor	HOPH-C8-6W	6.30
7.Internal Cylinder	HOPH-C8-7W	6.80
8.Piston	HOPH-C8-8W	42.5
9.External Cylinder	HOPH-C8-9W	69.00
10.Guided Sleeve	HOPH-C8-10W	6.00
11."O"Ring of Stop Ring	HOPH-C8-11W	0.01
12.Stop Ring	HOPH-C8-12W	1.20
13.Breakout Ring of DC	HOPH-C8-13W	0.01
14.Drive Chuck(DC)	HOPH-C8-14W	18.90
15.Drill Bit	HOPH-C8-15W	

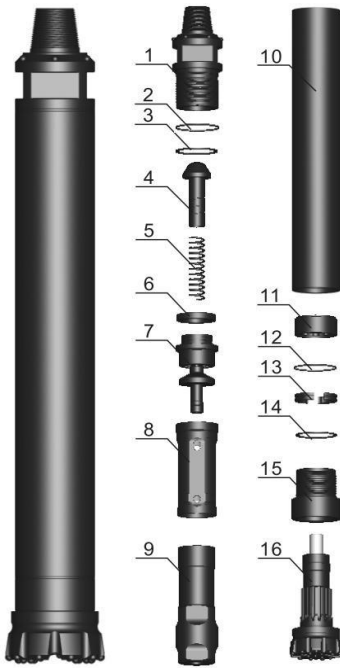
Technical Parameters

Length(without bit)	Weigth(without bit)	External diameter	Bit shank	Hole range	Connection thread
1359mm	186.50kg	185mm	COP84 DHD380	195mm-254mm	API 4 1/2"Reg
Working pressure	Impact rate at 17bar	Speed recommended	Pull force recommended	Reference air consumption (m3/min)	
10-25bar	22HZ	20-45rpm	18KN	14Bar	24Bar
				18.67	39.24

DTH Drill Bit Design

Gauge 10 x 18mm, Face 8x18mm,5x16mm	Gauge 10 x 18mm, Face 8x18mm,6x16mm	Gauge 10 x 18mm, Face 8x18mm,6x16mm
COP84W-203mm-CC	COP84W-216mm-CC	COP84W-219mm-CC
Gauge 12 x 18mm, Face 12x16mm,7x16mm	Gauge 12 x 18mm, Face 12x16mm,7x16mm	Gauge 12 x 19mm, Face 12x16mm,8x16mm
COP84W-229mm-CC	COP84W-235mm-CC	COP84W-254mm-CC

8 INCH QL80 DTH HAMMER, BIT WITH BLOW TUBE/FOOT VALVE



Part Name	Part Number	Weight(kg)
1.Top Sub	HOPH-Q8-1	44.60
2."O"Ring of Top Sub	HOPH-Q8-2	0.01
3.Breakout Ring of Top Sub	HOPH-Q8-3	0.30
4.Check Valve	HOPH-Q8-4	1.30
5.Spring	HOPH-Q8-5	0.20
6.Compression Buffer	HOPH-Q8-6	0.46
7.Air Distributor	HOPH-Q8-7	13.20
8.Internal Cylinder	HOPH-Q8-8	8.40
9.Piston	HOPH-Q8-9	41.50
10.External Cylinder	HOPH-Q8-10	74.10
11.Guided Sleeve	HOPH-Q8-11	3.70
12."O"Ring of Stop Ring	HOPH-Q8-12	0.01
13.Stop Ring	HOPH-Q8-13	1.20
14.Breakout Ring of DC	HOPH-Q8-14	0.35
15.Drive Chuck(DC)	HOPH-Q8-15	13.60
16.Drill Bit	HOPH-Q8-16	

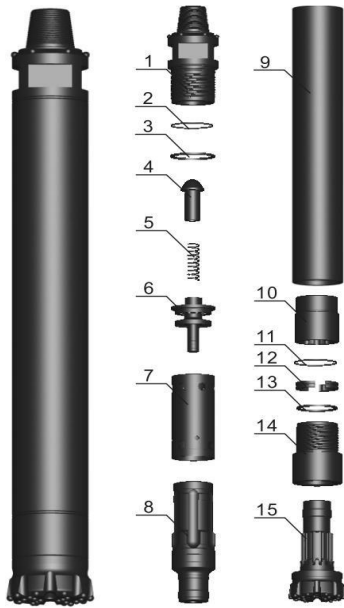
Technical Parameters

Length(without bit)	Weigth(without bit)	External diameter	Bit shank	Hole range	Connection thread
1471mm	203.00kgs	185mm	QL80	195mm-254mm	API 4 1/2"Reg
Working pressure	Impact rate at 17bar	Speed recommended	Pull force recommended	Reference air consumption (m3/min)	
10-25bar	20HZ	20-45rpm	19KN	14Bar	24Bar
				20.75	43.60

DTH Drill Bit Design

 Gauge 10 x 18mm, Face 8x18mm,5x16mm QL80-203mm-CC	 Gauge 10 x 18mm, Face 8x18mm,6x16mm QL80-216mm-CC	 Gauge 10 x 18mm, Face 8x18mm,6x16mm QL80-219mm-CC
 Gauge 12 x 18mm, Face 12x16mm,7x16mm QL80-229mm-CC	 Gauge 12 x 18mm, Face 12x16mm,7x16mm QL80-235mm-CC	 Gauge 12 x 19mm, Face 12x16mm,8x16mm QL80-254mm-CC

8 INCH QL80W DTH HAMMER, BIT WITHOUT BLOW TUBE/FOOT VALVE



Part Name	Part Number	Weight(kg)
1.Top Sub	HOPH-Q8-1W	34.60
2."O"Ring of Top sub	HOPH-Q8-2W	0.02
3.Breakout Ring	HOPH-Q8-3W	0.35
4.Check Valve	HOPH-Q8-4W	0.90
5.Spring	HOPH-Q8-5W	0.10
6.Air Distributor	HOPH-Q8-6W	6.40
7.Internal Cylinder	HOPH-Q8-7W	6.30
8.Piston	HOPH-Q8-8W	42.50
9.External Cylinder	HOPH-Q8-9W	65.50
10.Guided Sleeve	HOPH-Q8-10W	10.00
11."O"Ring of Stop Ring	HOPH-Q8-11W	0.02
12.Stop Ring	HOPH-Q8-12W	1.20
13.Breakout Ring of DC	HOPH-Q8-13W	0.35
14.Drive Chuck(DC)	HOPH-Q8-14W	13.60
15.Drill Bit	HOPH-Q8-15W	

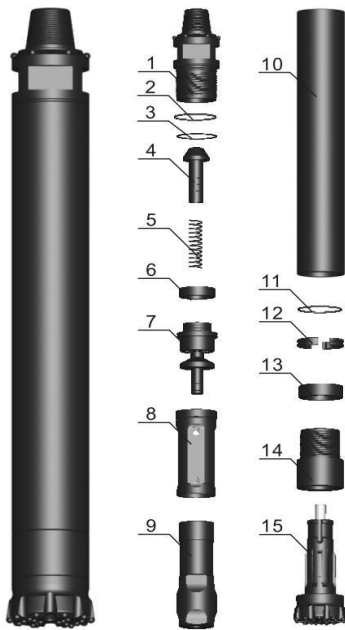
Technical Parameters

Length(without bit)	Weigth(without bit)	External diameter	Bit shank	Hole range	Connection thread
1330mm	182.00kgs	185mm	QL80	195mm-254mm	API 4 1/2"Reg
Working pressure	Impact rate at 17bar	Speed recommended	Pull force recommended	Reference air consumption (m3/min)	
10-30bar	22HZ	20-45rpm	18KN	14Bar	24Bar
				18.67	39.24

DTH Drill Bit Design

Gauge 10 x 18mm, Face 8x18mm,5x16mm	Gauge 10 x 18mm, Face 8x18mm,6x16mm	Gauge 10 x 18mm, Face 8x18mm,6x16mm
QL80W-203mm-CC	QL80W-216mm-CC	QL80W-219mm-CC
Gauge 12 x 18mm, Face 12x16mm,7x16mm	Gauge 12 x 18mm, Face 12x16mm,7x16mm	Gauge 12 x 19mm, Face 12x16mm,8x16mm
QL80W-229mm-CC	QL80W-235mm-CC	QL80W-254mm-CC

8 INCH SD8 DTH HAMMER, BIT WITH BLOW TUBE/FOOT VALVE



Part Name	Part Number	Weight(kg)
1.Top Sub	HOPH-SD8-1	41.40
2."O"Ring of Top sub	HOPH-SD8-2	0.01
3.Breakout Ring of Top sub	HOPH-SD8-3	0.30
4.Check Valve	HOPH-SD8-4	1.30
5.Spring	HOPH-SD8-5	0.20
6.Compression Buffer	HOPH-SD8-6	0.46
7.Air Distributor	HOPH-SD8-7	12.90
8.Internal Cylinder	HOPH-SD8-8	8.40
9.Piston	HOPH-SD8-9	43.40
10.External Cylinder	HOPH-SD8-10	62.50
11."O"Ring of Stop Ring	HOPH-SD8-11	0.01
12.Stop Ring	HOPH-SD8-12	1.30
13.Guided Sleeve	HOPH-SD8-13	3.40
14.Drive Chuck	HOPH-SD8-14	16.10
15.Drill Bit	HOPH-SD8-15	

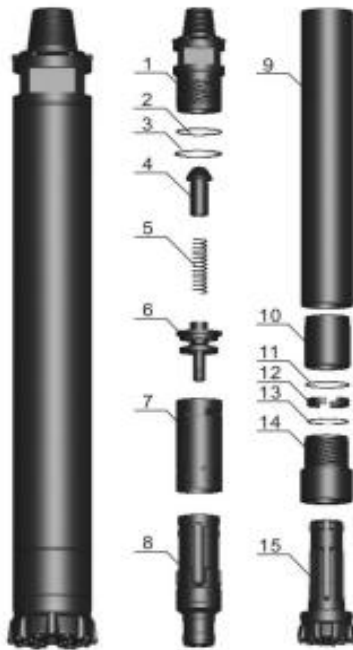
Technical Parameters

Length(without bit)	Weigth(without bit)	External diameter	Bit shank	Hole range	Connection thread
1463mm	192.00kg	180mm	SD8	195mm-254mm	API 4 1/2"Reg
Working pressure	Impact rate at 17bar	Speed recommended	Pull force recommended	Reference air consumption (m3/min)	
10-25bar	20HZ	20-45rpm	19kN	14Bar	24Bar
				20.75	43.60

DTH Drill Bit Design

Gauge 10 x 18mm, Face 8x18mm,5x16mm	Gauge 10 x 18mm, Face 8x18mm,6x16mm	Gauge 10 x 18mm, Face 8x18mm,6x16mm
SD8-203mm-CC	SD8-216mm-CC	SD8-219mm-CC
Gauge 12 x 18mm, Face 12x16mm,7x16mm	Gauge 12 x 18mm, Face 12x16mm,7x16mm	Gauge 12 x 19mm, Face 12x16mm,8x16mm
SD8-229mm-CC	SD8-235mm-CC	SD8-254mm-CC

8 INCH SD8W DTH HAMMER, BIT WITHOUT BLOW TUBE/FOOT VALVE



Part Name	Part Number	Weight(kg)
1.Top Sub	HOPH-SD8-1W	34.00
2."O"Ring of Top sub	HOPH-SD8-2W	0.01
3.Breakout Ring of Top sub	HOPH-SD8-3W	0.30
4.Check Valve	HOPH-SD8-4W	1.20
5.Spring	HOPH-SD8-5W	0.20
6.Air Distributor	HOPH-SD8-6W	6.00
7.Internal Cylinder	HOPH-SD8-7W	6.50
8.Piston	HOPH-SD8-8W	42.40
9.External Cylinder	HOPH-SD8-9W	59.00
10.Guided Sleeve	HOPH-SD8-10W	6.00
11."O"Ring of Stop Ring	HOPH-SD8-11W	0.01
12.Stop Ring	HOPH-SD8-12W	1.30
13.Breakout Ring	HOPH-SD8-13W	0.40
14.Drive Chuck	HOPH-SD8-14W	16.10
15.Drill Bit	HOPH-SD8-15W	

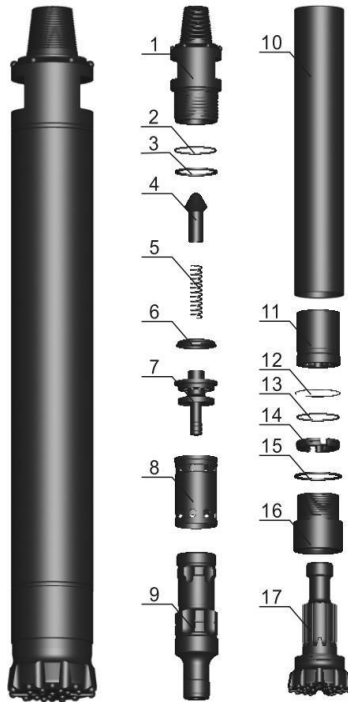
Technical Parameters

Length(without bit)	Weigth(without bit)	External diameter	Bit shank	Hole range	Connection thread
1330mm	174.00kg	180mm	SD8	195mm-254mm	API 4 1/2"Reg
Working pressure	Impact rate at 17bar	Speed recommended	Pull force recommended	Reference air consumption (m3/min)	
10-25bar	20HZ	20-45rpm	19KN	14Bar	24Bar
				20.75	43.60

DTH Drill Bit Design

SD8W-203mm-CC	SD8W-216mm-CC	SD8W-219mm-CC
SD8W-229mm-CC	SD8W-235mm-CC	SD8W-254mm-CC

8 INCH MISSION80W DTH HAMMER, BIT WITHOUT BLOW TUBE/FOOT VALVE



Part Name	Part Number	Weight(kg)
1.Top Sub	HOPH-M8-1	38.95
2."O"Ring of Top Sub	HOPH-M8-2	0.01
3.Breakout Ring of Top Sub	HOPH-M8-3	0.30
4.Check Valve	HOPH-M8-4	0.90
5.Spring	HOPH-M8-5	0.20
6.Compression Buffer	HOPH-M8-6	0.30
7.Air Distributor	HOPH-M8-7	7.20
8.Internal Cylinder	HOPH-M8-8	5.10
9.Piston	HOPH-M8-9	38.50
10.External Cylinder	HOPH-M8-10	64.20
11.Guided Sleeve	HOPH-M8-11	8.10
12.Retaining Ring	HOPH-M8-12	0.10
13."O"Ring of Stop Ring	HOPH-M8-13	0.01
14.Stop Ring	HOPH-M8-14	1.80
15.Breakout Ring	HOPH-M8-15	0.30
16.Drive Chuck	HOPH-M8-16	16.00
17.Drill Bit	HOPH-M8-17	

Technical Parameters

Length(without bit)	Weigth(without bit)	External diameter	Bit shank	Hole range	Connection thread
1345mm	186.00kg	185mm	MISSION80	195mm-254mm	API 4 1/2"Reg
Working pressure	Impact rate at 17bar	Speed recommended	Pull force recommended	Reference air consumption (m3/min)	
10-25bar	25HZ	20-45rpm	17KN	14Bar	24Bar
				16.60	34.88

DTH Drill Bit Design

MISSION80W-203mm-CC	MISSION80W-216mm-CC	MISSION80W-219mm-CC
MISSION80W-229mm-CC	MISSION80W-235mm-CC	MISSION80W-254mm-CC

8 INCH MISSION80WI DTH HAMMER, BIT WITHOUT BLOW TUBE/FOOT VALVE AND INTERNAL CYLINDER



Part Name	Part Number	Weight(kg)
1.Top Sub	HOPH-M8-1WI	37.00
2."O"Ring of Top Sub	HOPH-M8-2WI	0.01
3.Breakout Ring of Top Sub	HOPH-M8-3WI	0.50
4.Check Valve	HOPH-M8-4WI	0.90
5.Spring	HOPH-M8-5WI	0.20
6.Compression Buffer	HOPH-M8-6WI	0.40
7.Base of Check Valve	HOPH-M8-7WI	4.70
8.Pin	HOPH-M8-8WI	0.05
9.Distributor Tube	HOPH-M8-9WI	4.00
10.Piston	HOPH-M8-10WI	43.50
11.External Cylinder	HOPH-M8-11WI	67.00
12.Guided Sleeve	HOPH-M8-12WI	7.80
13.Retaining Ring	HOPH-M8-13WI	0.20
14."O"Ring of Stop Ring	HOPH-M8-14WI	0.02
15.Stop Ring	HOPH-M8-15WI	1.30
16.Breakout Ring	HOPH-M8-16WI	0.50
17.Drive Chuck	HOPH-M8-17WI	15.50
18.Drill Bit	HOPH-M8-18WI	

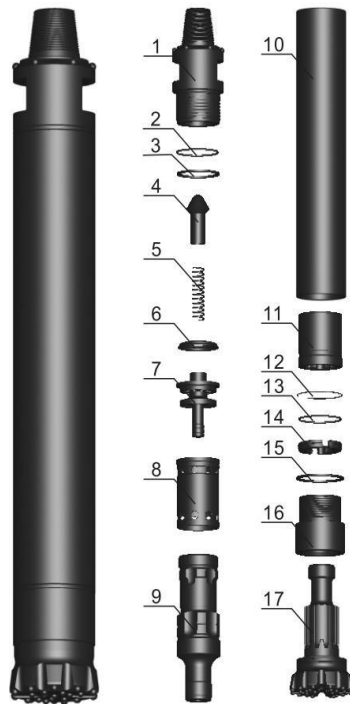
Technical Parameters

Length(without bit)	Weigth(without bit)	External diameter	Bit shank	Hole range	Connection thread
1307mm	184.00kg	185mm	MISSION80	195mm-254mm	API 4 1/2"Reg
Working pressure	Impact rate at 17bar	Speed recommended	Pull force recommended	Reference air consumption (m3/min)	
10-25bar	25HZ	20-45rpm	17KN	14Bar	24Bar
				16.60	34.88

DTH Drill Bit Design

MISSION80WI-203mm-CC	MISSION80WI-216mm-CC	MISSION80WI-219mm-CC
MISSION80WI-229mm-CC	MISSION80WI-235mm-CC	MISSION80WI-254mm-CC

9 INCH QL80W DTH HAMMER, BIT WITHOUT BLOW TUBE/FOOT VALVE



Part Name	Part Number	Weight(kg)
1.Top Sub	HOPH-9Q8-1W	46.80
2."O"Ring of Top Sub	HOPH-9Q8-2W	0.01
3.Breakout Ring of Top Sub	HOPH-9Q8-3W	1.30
4.Check Valve	HOPH-9Q8-4W	0.40
5.Spring	HOPH-9Q8-5W	0.20
6.Compression Buffer	HOPH-9Q8-6W	0.30
7.Air Distributor	HOPH-9Q8-7W	8.20
8.Internal Cylinder	HOPH-9Q8-8W	6.30
9.Piston	HOPH-9Q8-9W	48.10
10.External Cylinder	HOPH-9Q8-10W	79.20
11.Guided Sleeve	HOPH-9Q8-11W	12.90
12.Retaining Ring	HOPH-9Q8-12W	0.80
13."O"Ring of Stop Ring	HOPH-9Q8-13W	0.01
14.Stop Ring	HOPH-9Q8-14W	2.10
15.Breakout Ring	HOPH-9Q8-15W	0.30
16.Drive Chuck	HOPH-9Q8-16W	23.00
17.Drill Bit	HOPH-9Q8-17W	

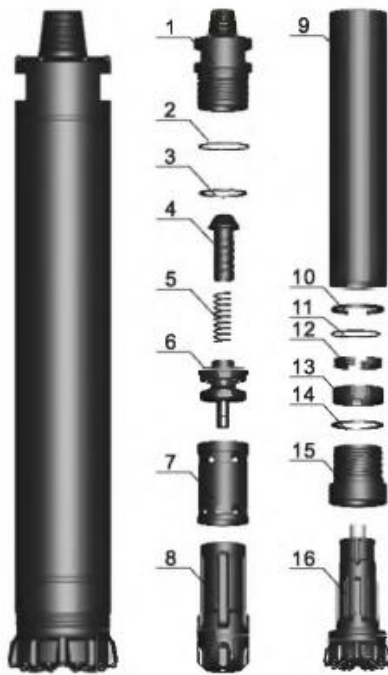
Technical Parameters

Length(without bit)	Weigth(without bit)	External diameter	Bit shank	Hole range	Connection thread
1363mm	230.00kg	203mm	QL80	216mm-275mm	API 4 1/2"Reg
Working pressure	Impact rate at 17bar	Speed recommended	Pull force recommended	Reference air consumption (m3/min)	
10-25bar	25HZ	20-45rpm	19KN	14Bar	24Bar
				20.00	40.18

DTH Drill Bit Design

<p>Gauge 10 x 18mm, Face 8x18mm,6x16mm</p>	<p>Gauge 10 x 18mm, Face 8x18mm,6x16mm</p>	<p>Gauge 12 x 18mm, Face 12x16mm,7x16mm</p>
9QL80W-216mm-CC	9QL80W-219mm-CC	9QL80W-229mm-CC
<p>Gauge 12 x 18mm, Face 12x16mm,7x16mm</p>	<p>Gauge 12 x 18mm, Face 12x16mm,8x16mm</p>	<p>Gauge 12 x 19mm, Face 12x16mm,8x16mm</p>
9QL80W-235mm-CC	9QL80W-245mm-CC	9QL80W-254mm-CC

10 INCH SD10 DTH HAMMER, BIT WITH BLOW TUBE/FOOT VALVE



Part Name	Part Number	Weight(kg)
1.Top Sub	HOPH-SD10-1	63.00
2."O"Ring of Top Sub	HOPH-SD10-2	0.05
3.Breakout Ring of Top Sub	HOPH-SD10-3	1.20
4.Check Valve	HOPH-SD10-4	1.50
5.Spring	HOPH-SD10-5	0.20
6.Air Distributor	HOPH-SD10-6	13.00
7.Internal Cylinder	HOPH-SD10-7	13.60
8.Piston	HOPH-SD10-8	68.00
9.External Cylinder	HOPH-SD10-9	92.50
10.Retaining Ring	HOPH-SD10-10	0.50
11."O"Ring of Stop Ring	HOPH-SD10-11	0.01
12.Stop Ring	HOPH-SD10-12	2.80
13.Guided Sleeve	HOPH-SD10-13	5.00
14. Breakout Ring of DC	HOPH-SD10-14	1.20
15.Drive Chuck(DC)	HOPH-SD10-15	23.50
16.Drill Bit	HOPH-SD10-16	

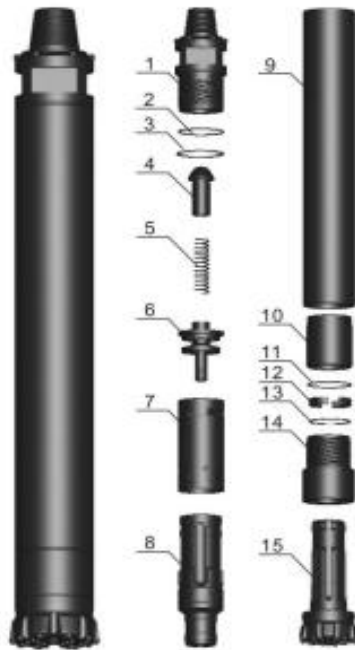
Technical Parameters

Length(without bit)	Weigth(without bit)	External diameter	Bit shank	Hole range	Connection thread
1413mm	303.00kg	225mm	SD10	254mm-305mm	API 4 1/2"Reg API 5 1/2"Reg
Working pressure	Impact rate at 17bar	Speed recommended	Pull force recommended	Reference air consumption (m3/min)	
10-25bar	20HZ	15-35rpm	21KN	10Bar	24Bar
				22.00	55.00

DTH Drill Bit Design

Gauge 12 x 19mm, Face 12x16mm,8x18mm,6x16mm	Gauge 12 x 19mm, Face12x16mm,8x18mm,6x16mm	Gauge 15 x 19mm, Face 15x18mm,12x18mm,9x16mm
SD10-254mm-CC	SD10-275mm-CC	SD10-305mm-CC

10 INCH SD10W DTH HAMMER, BIT WITHOUT BLOW TUBE/FOOT VALVE



Part Name	Part Number	Weight(kg)
1.Top Sub	HOPH-SD10-1W	59.00
2."O"Ring of Top sub	HOPH-SD10-2W	0.01
3.Breakout Ring of Top sub	HOPH-SD10-3W	0.50
4.Check Valve	HOPH-SD10-4W	1.40
5.Spring	HOPH-SD10-5W	0.30
6.Air Distributor	HOPH-SD10-6W	10.50
7.Internal Cylinder	HOPH-SD10-7W	12.50
8.Piston	HOPH-SD10-8W	77.00
9.External Cylinder	HOPH-SD10-9W	110.00
10.Guided Sleeve	HOPH-SD10-10W	11.50
11."O"Ring of Stop Ring	HOPH-SD10-11W	0.01
12.Stop Ring	HOPH-SD10-12W	1.50
13.Breakout Ring	HOPH-SD10-13W	0.50
14.Drive Chuck	HOPH-SD10-14W	31.50
15.Drill Bit	HOPH-SD10-15W	

Technical Parameters

Length(without bit)	Weigth(without bit)	External diameter	Bit shank	Hole range	Connection thread
1525mm	295.00kg	225mm	SD10	254mm-305mm	API 4 1/2"Reg API 5 1/2"Reg
Working pressure	Impact rate at 17bar	Speed recommended	Pull force recommended	Reference air consumption (m3/min)	
10-25bar	20HZ	15-35rpm	21KN	14Bar	24Bar
				22.00	55.00

DTH Drill Bit Design

Gauge 12 x 19mm, Face 12x16mm,8x18mm,6x16mm	Gauge 12 x 19mm, Face 12x16mm,8x18mm,6x16mm	Gauge 15 x 19mm, Face 15x18mm,12x18mm,9x16mm
SD10W-254mm-CC	SD10W-275mm-CC	SD10W-305mm-CC

10 INCH NUMA100 DTH HAMMER, BIT WITH BLOW TUBE/FOOT VALVE



Part Name	Part Number	Weight(kg)
1.Top Sub	HOPH-N100-1	63.00
2."O"Ring of Top Sub	HOPH-N100-2	0.05
3.Breakout Ring of Top Sub	HOPH-N100-3	1.20
4.Check Valve	HOPH-N100-4	1.50
5.Spring	HOPH-N100-5	0.20
6.Air Distributor	HOPH-N100-6	13.00
7.Internal Cylinder	HOPH-N100-7	13.60
8.Piston	HOPH-N100-8	68.00
9.External Cylinder	HOPH-N100-9	92.50
10.Retaining Ring	HOPH-N100-10	0.50
11."O"Ring of SR	HOPH-N100-11	0.01
12.Stop Ring(SR)	HOPH-N100-12	2.80
13.Breakout Ring of SR	HOPH-N100-13	1.20
14.Drive Chuck	HOPH-N100-14	28.50
15.Drill Bit	HOPH-N100-15	

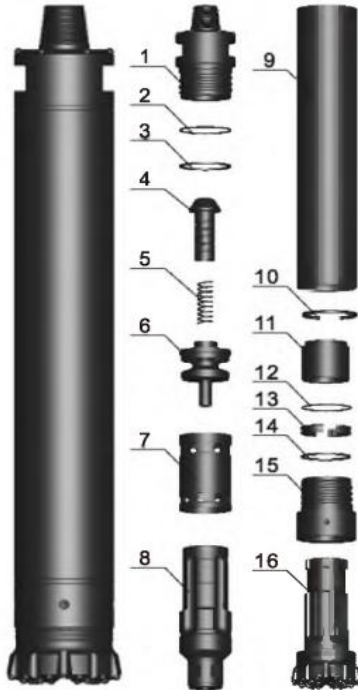
Technical Parameters

Length(without bit)	Weigth(without bit)	External diameter	Bit shank	Hole range	Connection thread
1441mm	308.00kg	225mm	NUMA100	254mm-305mm	API 4 1/2"Reg API 5 1/2"Reg
Working pressure	Impact rate at 17bar	Speed recommended	Pull force recommended	Reference air consumption (m3/min)	
10-25bar	20HZ	15-35rpm	19KN	14Bar	24Bar
				24.75	50.94

DTH Drill Bit Design

Gauge 12 x 19mm, Face 12x16mm,8x18mm,6x16mm	Gauge 12 x 19mm, Face 12x16mm,8x18mm,6x16mm	Gauge 15 x 19mm, Face 15x18mm,12x18mm,9x16mm
NUMA100-254mm-CC	NUMA100-275mm-CC	NUMA100-305mm-CC

10 INCH NUMA100W DTH HAMMER, BIT WITHOUT BLOW TUBE/FOOT VALVE



Part Name	Part Number	Weight(kg)
1.Top Sub	HOPH-N100-1W	59.60
2."O"Ring of Top Sub	HOPH-N100-2W	0.05
3.Breakout Ring of Top Sub	HOPH-N100-3W	1.20
4.Check Valve	HOPH-N100-4W	1.50
5.Spring	HOPH-N100-5W	0.20
6.Air Distributor	HOPH-N100-6W	13.00
7.Internal Cylinder	HOPH-N100-7W	13.60
8.Piston	HOPH-N100-8W	77.50
9.External Cylinder	HOPH-N100-9W	102.00
10.Retaining Ring	HOPH-N100-10W	0.50
11. Guided Sleeve	HOPH-N100-11W	9.60
12."O"Ring of Stop Ring	HOPH-N100-12W	0.05
13.Stop Ring	HOPH-N100-13W	2.30
14. Breakout Ring of DC	HOPH-N100-14W	1.20
15.Drive Chuck(DC)	HOPH-N100-15W	25.50
16.Drill Bit	HOPH-N100-16W	

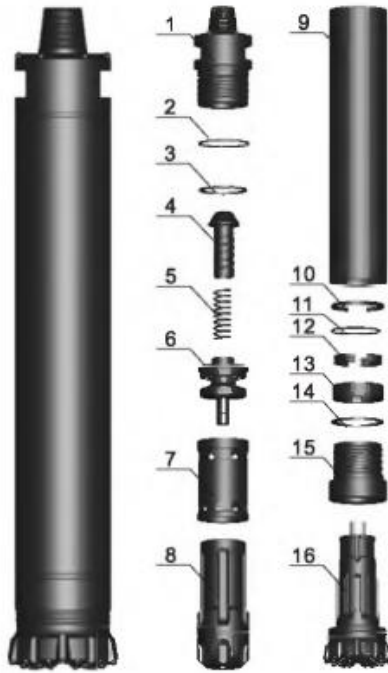
Technical Parameters

Length(without bit)	Weigth(without bit)	External diameter	Bit shank	Hole range	Connection thread
1536mm	307.50kg	225mm	NUMA100	254mm-305mm	API 4 1/2"Reg API 5 1/2"Reg
Working pressure	Impact rate at 17bar	Speed recommended	Pull force recommended	Reference air consumption (m3/min)	
10-25bar	20HZ	20-40rpm	19KN	14Bar	24Bar
				24.70	50.94

DTH Drill Bit Design

Gauge 12 x 19mm, Face 12x16mm, 8x18mm, 6x16mm	Gauge 12 x 19mm, Face 12x16mm, 8x18mm, 6x16mm	Gauge 15 x 19mm, Face 15x18mm, 12x18mm, 9x16mm
NUMA100W-254mm-CC	NUMA100W-275mm-CC	NUMA100W-305mm-CC

12 INCH SD12 DTH HAMMER, BIT WITH BLOW TUBE/FOOT VALVE



Part Name	Part Number	Weight(kg)
1.Top Sub	HOPH-SD12-1	121.70
2."O"Ring of Top Sub	HOPH-SD12-2	0.05
3.Breakout Ring of Top Sub	HOPH-SD12-3	2.10
4.Check Valve	HOPH-SD12-4	2.10
5.Spring	HOPH-SD12-5	0.20
6.Air Distributor	HOPH-SD12-6	20.00
7.Internal Cylinder	HOPH-SD12-7	31.60
8.Piston	HOPH-SD12-8	110.00
9.External Cylinder	HOPH-SD12-9	168.50
10.Retaining Ring	HOPH-SD12-10	1.50
11."O"Ring of Stop Ring	HOPH-SD12-11	0.01
12.Stop Ring	HOPH-SD12-12	5.20
13.Guided Sleeve	HOPH-SD12-13	9.90
14. Breakout Ring of DC	HOPH-SD12-14	2.10
15.Drive Chuck(DC)	HOPH-SD12-15	50.90
16.Drill Bit	HOPH-SD12-16	

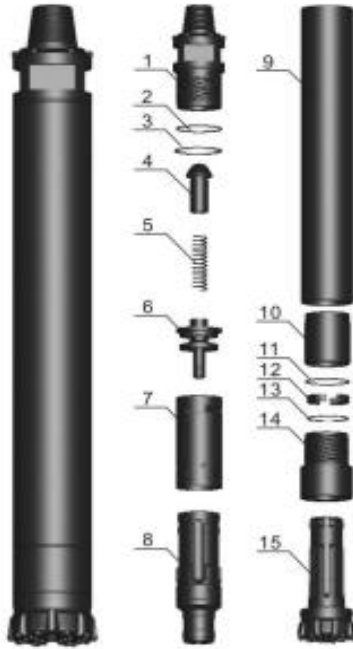
Technical Parameters

Length(without bit)	Weigth(without bit)	External diameter	Bit shank	Hole range	Connection thread
1680mm	526.00kg	275mm	SD12	305mm-445mm	API 6 5/8"Reg
Working pressure	Impact rate at 17bar	Speed recommended	Pull force recommended	Reference air consumption (m3/min)	
10-25bar	18HZ	15-35rpm	28KN	14Bar	24Bar
				36.60	60.60

DTH Drill Bit Design

SD12-305mm-CC	SD12-325mm-CC	SD12-350mm-CC

12 INCH SD12W DTH HAMMER, BIT WITHOUT BLOW TUBE/FOOT VALVE



Part Name	Part Number	Weight(kg)
1.Top Sub	HOPH-SD12-1W	110.00
2."O"Ring of Top Sub	HOPH-SD12-2W	0.01
3.Breakout Ring of Top Sub	HOPH-SD12-3W	1.00
4.Check Valve	HOPH-SD12-4W	2.00
5.Spring	HOPH-SD12-5W	0.30
6.Air Distributor	HOPH-SD12-6W	20.50
7.Internal Cylinder	HOPH-SD12-7W	25.50
8.Piston	HOPH-SD12-8W	115.00
9.External Cylinder	HOPH-SD12-9W	175.00
10.Guided Sleeve	HOPH-SD12-10W	25.50
11."O"Ring of Stop Ring	HOPH-SD12-11W	0.01
12.Stop Ring	HOPH-SD12-12W	6.00
13.Breakout Ring	HOPH-SD12-13W	1.00
14.Drive Chuck	HOPH-SD12-14W	50.00
15.Drill Bit	HOPH-SD12-15W	

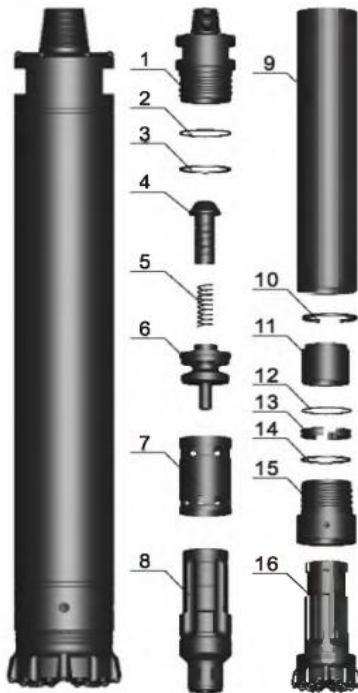
Technical Parameters

Length(without bit)	Weigth(without bit)	External diameter	Bit shank	Hole range	Connection thread
1860mm	530.00kg	275mm	SD12	305mm-445mm	API 6 5/8"Reg
Working pressure	Impact rate at 17bar	Speed recommended	Pull force recommended	Reference air consumption (m3/min)	
10-25bar	18HZ	15-35rpm	28KN	14Bar	24Bar
				36.60	60.60

DTH Drill Bit Design

Gauge 27x 18mm, Face 15x18mm,11x16mm	Gauge 27x 18mm, Face15x18mm,15x16mm	Gauge 27x 18mm, Face 24x18mm,12x16mm
SD12W-305mm-CC	SD12W-325mm-CC	SD12W-350mm-CC

12 INCH NUMA125W DTH HAMMER, BIT WITHOUT BLOW TUBE/FOOT VALVE



Part Name	Part Number	Weight(kg)
1.Top Sub	HOPH-N125-1W	59.60
2."O"Ring of Top Sub	HOPH-N125-2W	0.05
3.Breakout Ring of Top Sub	HOPH-N125-3W	1.20
4.Check Valve	HOPH-N125-4W	1.50
5.Spring	HOPH-N125-5W	0.20
6.Air Distributor	HOPH-N125-6W	13.00
7.Internal Cylinder	HOPH-N125-7W	13.60
8.Piston	HOPH-N125-8W	77.50
9.External Cylinder	HOPH-N125-9W	102.00
10.Retaining Ring	HOPH-N125-10W	0.50
11. Guided Sleeve	HOPH-N125-11W	9.60
12."O"Ring of Stop Ring	HOPH-N125-12W	0.05
13.Stop Ring	HOPH-N125-13W	2.30
14. Breakout Ring of DC	HOPH-N125-14W	1.20
15.Drive Chuck(DC)	HOPH-N125-15W	25.50
16.Drill Bit	HOPH-N125-16W	

Technical Parameters

Length(without bit)	Weigth(without bit)	External diameter	Bit shank	Hole range	Connection thread
1956mm	578.00kg	275mm	NUMA125	305mm-445mm	API 6 5/8"Reg
Working pressure	Impact rate at 17bar	Speed recommended	Pull force recommended	Reference air consumption (m3/min)	
10-25bar	20HZ	15-35rpm	28KN	14Bar	24Bar
				32.94	54.54

DTH Drill Bit Design

NUMA125W-305mm-CC	NUMA125W-325mm-CC	NUMA125W-350mm-CC

DRILL PIPES

Diameter (mm)	Wall Thickness (mm)	Length (mm)	Wrench Flat (mm)	Connection Thread
76	4	1000-3000	57/65	API 2 3/8"Reg
76	6	1000-6000	65	API 2 3/8"Reg
89	6	1000-6000	65	API 2 3/8"Reg 2 3/8"IF
89	8	1000-6000	65	API 2 3/8"Reg 2 3/8"IF
102	8	1000-6000	75	API 2 7/8"Reg
102	10	1000-6000	75	API 2 7/8"Reg
114	8	1000-6000	89/95	API 2 3/8"Reg 2 7/8"IF 3 1/2"IF
114	10	1000-6000	89/95	API 2 3/8"Reg 2 7/8"IF 3 1/2"IF
127	8	1000-6000	89	API 3 1/2"Reg API 4 1/2"Reg
127	10	1000-6000	89	API 3 1/2"Reg API 4 1/2"Reg
127	12	1000-6000	89	API 3 1/2"Reg API 4 1/2"Reg
140	10	1000-6000	114	API 4 1/2"Reg
140	12	1000-6000	114	API 4 1/2"Reg
140	19	1000-6000	114	API 4 1/2"Reg



BOX TO BOX ADAPTERS

Diameter (mm)	Length (mm)	Wrench Flat (mm)	Connection Thread		Weight (kg)	Part Number
76	200	65	API 2 3/8"Reg	API 2 3/8"Reg	4.50	HBBA238API /238API-76
89	200	65	API 2 3/8"Reg	API 2 3/8"Reg	6.00	HBBA238API /238API-89
89	508	70	API 2 3/8"Reg	2 3/8"IF	17.00	HBBA238API/238IF-89
114	254	102	API 2 7/8"Reg	API 3 1/2"Reg	10.00	HBBA278API /312API-114
114	210	95	API 2 3/8"Reg	API 3 1/2"Reg	10.00	HBBA238API /312API-114
121	305	102	API 3 1/2"Reg	API 3 1/2"Reg	18.00	HBBA312API /312API-121
140	305	127	API 4 1/2"Reg	API 4 1/2"Reg	23.00	HBBA412API /412API-140
140	610		API 4 1/2"Reg	2 7/8"IF	29.00	HBBA412API /278IF-140

PIN TO PIN ADAPTERS

Diameter (mm)	Length (mm)	Wrench Flat (mm)	Connection Thread		Weight (kg)	Part Number
76	60	65	RD50-6	API 2 3/8"Reg	3.00	HPPA506RD /238API-76
89	70	65	RD70-4	API 2 3/8"Reg	4.60	HPPA704RD/238API-89
89	70	65	API 2 3/8"Reg	API 2 3/8"Reg	4.60	HPPA238API/238API-89
121	495		2 3/8"IF	3 1/2"IF	28.00	HPPA238IF /312IF-121
127	970	89	4"FH	3 1/2"IF	91.00	HPPA4FH/312IF-127
146	203	120	API 4 1/2"Reg	API 4 1/2"Reg	10.00	HPPA412API /412API -140



BOX TO PIN ADAPTERS

Diameter (mm)	Length (mm)	Wrench Flat (mm)	Connection Thread		Weight (kg)	Part Number
76	145	65	API 2 3/8"Reg	RD50-6	4.00	HBPA238API /506RD-76
76	140	65	API 2 3/8"Reg	API 2 3/8"Reg	4.00	HBPA238API /238API-76
89	356	64	API 2 3/8"Reg	3 1/2"IF	21.00	HBPA238API/312IF-89
89	140	65	API 2 3/8"Reg	API 2 3/8"Reg	6.00	HBPA238API /238API-89
89	152	65	API 2 7/8"Reg	API 2 3/8"Reg	6.50	HBPA278API /238API-89
95	130	65	API 2 3/8"Reg	API 2 7/8"Reg	8.00	HBPA238API /278API-95
102	130	76	API 2 3/8"Reg	API 2 3/8"Reg	7.80	HBPA238API /238API-102
102	229	89	API 2 7/8"Reg	API 2 7/8"Reg	11.00	HBPA278API /278API-102
102	356	76	API 2 7/8"Reg	3 1/2"IF	25.00	HBPA278API/312IF-102
102	340	76	API 3 1/2"Reg	2 1/2"Z	25.00	HBPA312API/212Z-102
102	305	76	API 3 1/2"Reg	API 2 7/8"Reg	14.50	HBPA312API /278API-102
102	229	89	API 3 1/2"Reg	API 2 7/8"Reg	11.00	HBPA312API /278API-102
114	219	95	API 3 1/2"Reg	API 2 3/8"Reg	12.50	HBPA312API /238API-114
114	254	89	API 3 1/2"Reg	2"Z	10.00	HBPA312API /2Z-114
114	607	89	API 4 1/2"Reg	API 3 1/2"Reg	36.00	HBPA412API /312API-114
114	160	95	API 3 1/2"Reg	API 2 7/8"Reg	7.50	HBPA312API /278API-114
114	160	95	API 3 1/2"Reg	2 7/8"IF	8.00	HBPA312API /278IF-114
114	160	95	API 3 1/2"Reg	API 3 1/2"Reg	8.00	HBPA312API /312API-114
127	483	89	2 7/8"IF	4"FH	36.00	HBPA278IF/4FH-127
127	229	89	API 3 1/2"Reg	API 3 1/2"Reg	20.00	HBPA312API /312API-127
127	229	89	API 3 1/2"Reg	3 1/2" BECO	20.00	HBPA312API /312BC-127
127	419	89	API 3 1/2"Reg	4"FH	25.00	HBPA312API/4FH-127
140	813	114	API 3 1/2"Reg	3 1/2" BECO	86.00	HBPA312API /312BC-140
140	483	114	3 1/2" BECO	4"FH	33.00	HBPA312BC/4FH-140
140	607	89	4"FH	2 7/8"IF	37.00	HBPA4FH/278IF-140
140	229	114	API 4 1/2"Reg	API 3 1/2"Reg	21.00	HBPA412API /312API-140
140	229	114	API 4 1/2"Reg	3 1/2" BECO	21.00	HBPA412API /312BC-140
146	483	89	API 2 7/8"Reg	4"IF	33.00	HBPA278API /4IF-146

146	131	120	API 3 1/2"Reg	API 4 1/2"Reg	16.5	HBPA312API /412API-146
146	235	95	API 4 1/2"Reg	API 3 1/2"Reg	19.00	HBPA412API /312API-146
152	483	89	API 2 7/8"Reg	4"IF	56.00	HBPA278API /4IF-152
152	483	89	API 3 1/2"Reg	4"IF	51.00	HBPA312API /4IF-152
152	483	89	3 1/2" BECO	4"IF	49.00	HBPA312BC/4IF-152
152	483	89	4" BECO	4"IF	55.00	HBPA4BC/4IF-152

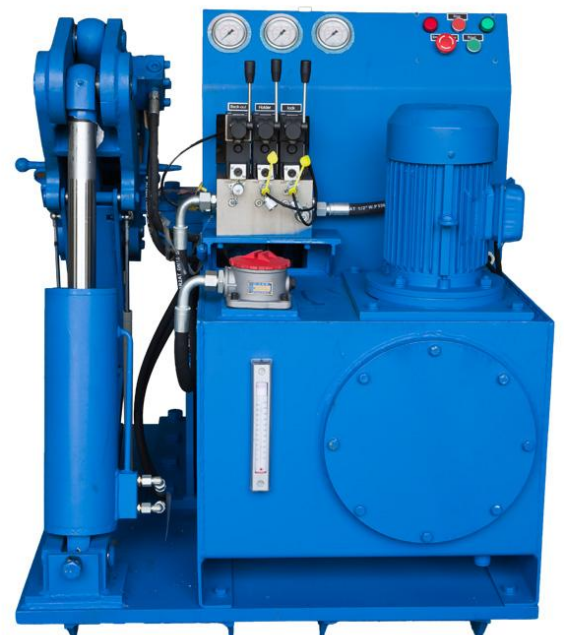
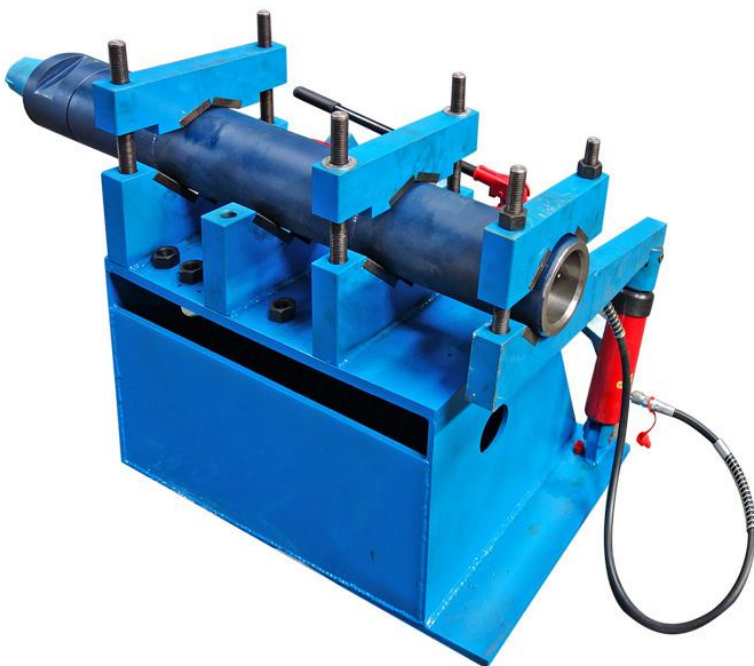
BREAKOUT BENCHES

The thread connections of the Drive Chuck and Top Sub may become very tightly tensioned during drilling. It is convenient to break the hammer threads on the rig, but if the threads cannot be loosened or tend to get stuck, a breakout bench is the solution. This handy but powerful breakout bench can easily be placed in a workshop or container and it breaks DTH hammers between 3" and 8". Select right breakout bench depending on voltage and power source.

The standard motor request power source with 3 phase, 380V,50Hz. we can adjust the motor as customers request.

Main Technical Data

Operating Mode	By Hydraulic Jack (Manual)		By Electric Motor
Model	HB-5	HB-8	HBE3-8
Hammer Size	3-5"	6-8"	3.5-8"
Length	920mm	1100mm	1060mm
Width	510mm	620mm	930mm
Height	875mm	875mm	1050mm
Weight	350kg	350kg	800kg



BACK HAMMERS

In case of jamming of any drilling tool in drilling process, the back hammer will help you to solve that.

Backhammer is a tool that can save and recover a drill string stuck in a hole, it can be easily fitted in a suitable tube joint between the drill support and the rotation head to provide an effective combination of backward hammering and vibration to loosen stuck drill strings.

Note:The connection thread can be customized.

Product	Pressure(Bar)	Thread	Total Length(mm)	Diameter(mm)	Weight(Kg)
HBH140	8	API 3 1/2" REG	510	140	31
HBH160	8	API 3 1/2" REG	540	160	44
HBH190	8	API 4 1/2" REG	580	190	63
HBH240	8	API 4 1/2" REG	600	240	85





This page has been intentionally left blank for information recording.

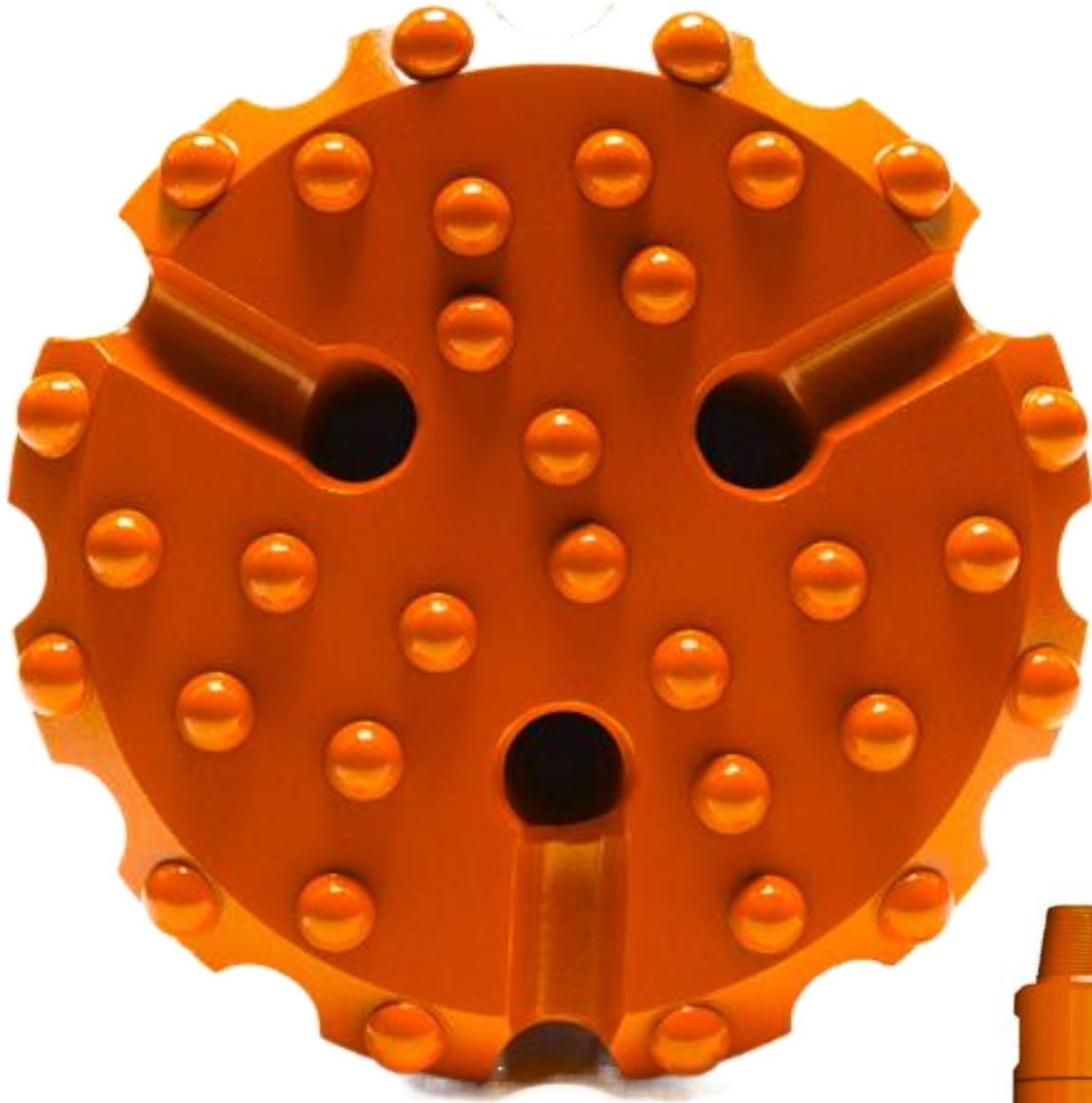


贵州惠洋众一机械制造有限公司

G.Y.HOPH STROVE TOOLS MANUFACTURE CO.,LTD

Address: No.108,Development Ave,Xiaohe Economic and Technology Development Zone,Guiyang,Guizhou,China.

www.hophstrove.com Tel:+86 851 8383 5233 Fax: +86 851 8380 6385



DTH ROCK DRILLING TOOLS

