



**THE
BEST
OF
BOTH
WORLDS.**

ADR® 1000
a proven concept

REPORTING & ANALYTICS

- Real-time data capture and advanced analytics reporting
- Process improvement, flat time reduction
- End of well Performance Reports
- Quarterly reporting and reviews
- Well optimized, reduced flat time
- Automated reporting
- Machine learning at the rig and in the cloud
- Analytics for well-over-well and driller-over-driller performance
- Equipment Health Monitoring streaming rig data for dashboards and alerting
- Data and analytics for Advance
- Performance Management team, closes the loop with the rig on KPIs
- Remote access of EDGE Rig OS and EDGE Controls for monitoring, troubleshooting, advisory

Specifications.

CONDENSED BACKYARD

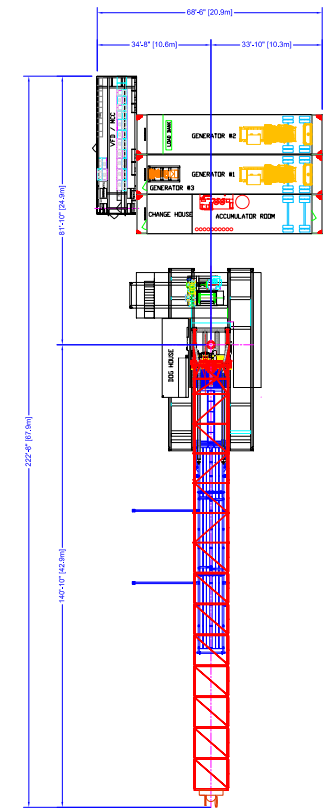
- Main ADR 1000 Substructure & Top Drive
- Generators & tanks
- Small footprint

X-Y WALKING CAPABILITIES

- Walk to and around most rig pad configurations

RIG POWER

- Caterpillar diesel
- Highline/grid power capable
- Minimum 15 ft well spacing



Advantages.

1 EXTENDED REACH LATERAL

- 3 miles +

2 RACKS DOUBLES

3 SIMILAR MOVE/WALK TIMES

- Walking Capacity: 250ft (76m)
- Walks with snubbing unit and pipe in Derrick

4 HIGH TORQUE TOP DRIVE & HOISTING LIMITS

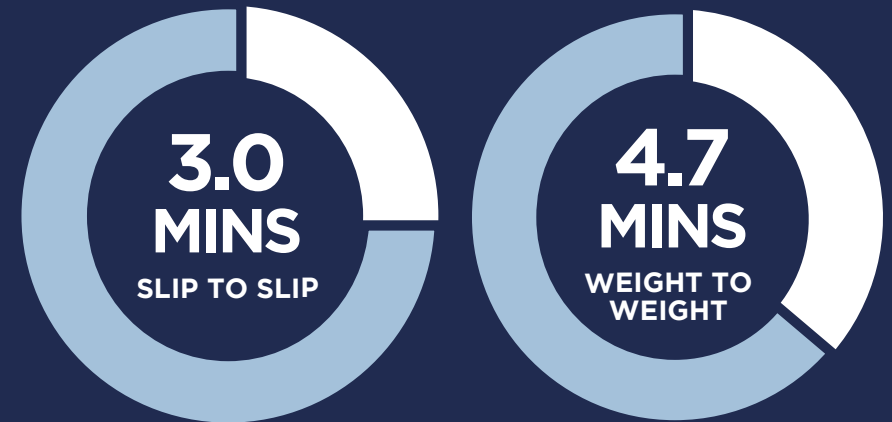
- Torque : 30,000/400 hp
- Hoisting Limit: 500,000 lbs / 222,400 daN
- Setback Capacity : 300,000 lbs (upgrade to 400,000 lbs available on select rigs)

5 TOP DRIVE ADVANTAGES

- 2 - 7/8 string design PTECH 28 - S-135 string
- Larger tubing/string design
- Superior weight and torque limits
- Drill out with doubles/triples (dictated by BOP height)

ADR 1000 Performance Data.

CONNECTION TIME



TRIPPING SPEEDS

**Average times are based of tripping singles not doubles/triples*

+2200 FT/HR TRIPPING SINGLES



Ensign United States Drilling Inc.

18287 Weld, Co Road 394
La Salle, CO 80645
TEL 970.284.6977

info@ensignenergy.com
ensignenergy.com

