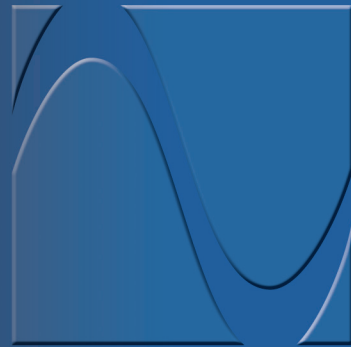


NAUTILUS[®]

Marine Crane Rental Services

Model 20BA-30/40



Nautilus[®] Marine Crane Rental Services

Industry-leading Rental Cranes

Marine Crane Rental, Service and Support

Sometimes you don't need a new, permanently mounted crane. Instead, you need a cost-effective, temporary solution for your lifting requirements - a rental crane that gets the job done and then moves on to its next destination.

Whether you're operating in the Gulf of Mexico or the Persian Gulf, Oil States has your rental crane needs covered. We offer localized field service and technical support around the world, and our professionals are ready to support your rental requirements around the clock, every day of the year.

Our Rental Crane Technology

Oil States Skagit SMATCO's Nautilus Marine Cranes incorporate the latest hydraulic technology to deliver the highest quality slewing-bearing pedestal-mounted cranes available. Your rental crane will provide efficiency, safety and functionality.

- Boom connection allows quick addition of sections to lengthen the boom to your application
- Pinned connections assure quick and easy mobilization and demobilization
- Cylinder jack with a chain retention system allows multiple tie-down options
- Walk around control console provides a full view of the operation and reduces hazards for the operator
- Shipping frames supply easy movement of all the components

Specifications

Crane Sub Base	11,500 lbs.
Power Unit	3,400 lbs.
Boom/Shipping skid	5,500 lbs.
Pedestal/Turret with shipping skid	2,600 lbs.

Optional 40 Foot Boom Available

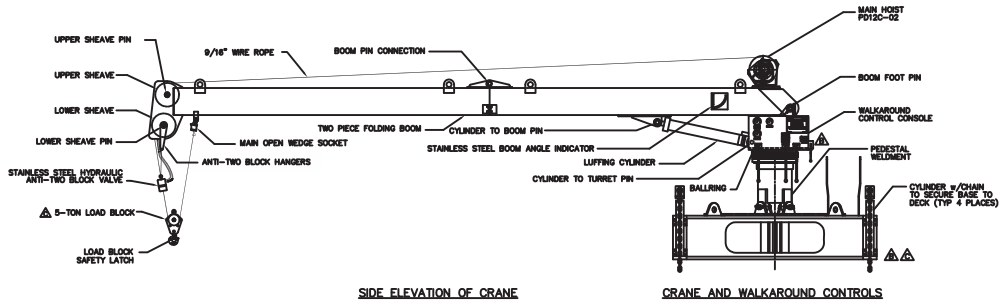
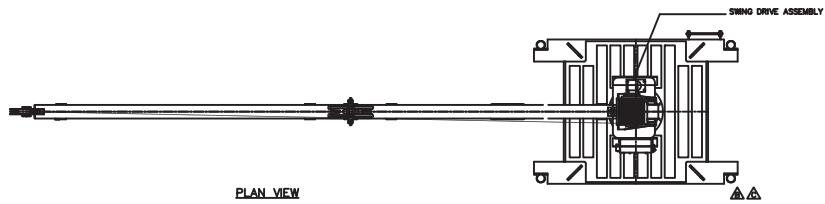


New Generation Nautilus Marine Rental Crane, Model 20BA-30

Oil States Skagit SMATCO's new Nautilus Marine Rental Crane Model 20BA-30/40 is manufactured to meet API 6th edition standards for all offshore drilling and production structures.

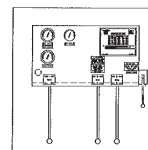
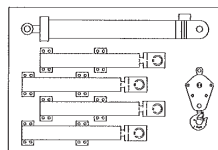
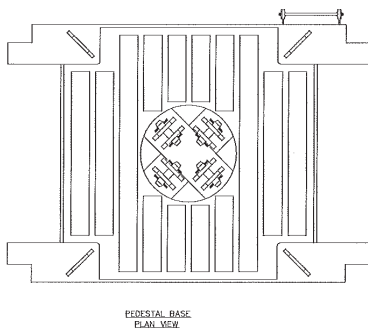
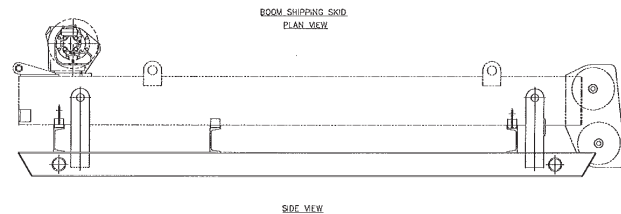
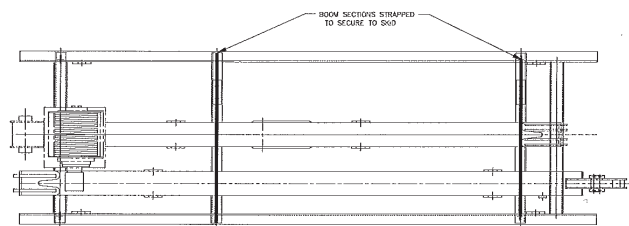
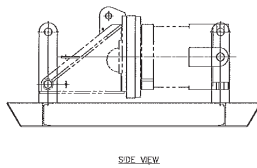
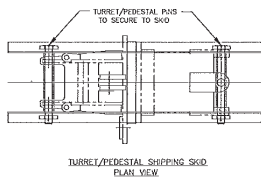


Lightweight Self-contained 93 HP Diesel Power Unit



		MAIN HOIST				PERSONNEL RATED LOAD (LBS.)
		TWO PART REEVING		ONE PART REEVING		
RADIUS (FT.)	BOOM ANGLE (DEG.)	ONBOARD RATED LOAD (LBS.)	OFFBOARD RATED LOAD (LBS.)	ONBOARD RATED LOAD (LBS.)	OFFBOARD RATED LOAD (LBS.)	
4.91	81	9,740	6,407	4,923	4,923	1,962
5	80	9,740	6,407	4,923	4,923	1,962
10	71	9,740	6,407	4,923	4,923	1,962
15	61	6,881	4,501	4,923	4,501	1,327
20	49	5,011	3,254	4,923	3,254	911
25	35	3,895	2,510	3,895	2,510	663
30	0	2,847	1,811	2,847	1,811	430

DESIGN CONDITIONS	
METHOD USED	DEFAULT DYNAMIC
HOOK DROP	100 FT.
MIN HOOK SPEED	25 FPM





Oil States Skagit SMATCO's indoor fabrication area for Nautilus Marine Cranes.



Oil States Skagit SMATCO's 185,000 square foot manufacturing, engineering, sales and service facility with waterfront access.

Oil States Skagit SMATCO
 Manufacturing, Engineering, Sales & Service
 1180 Mulberry Road
 Houma, Louisiana 70363 USA
 TEL: (985) 868 0630 FAX: (985) 868 9733
 Email: skagitsmatco.houston@oilstates.com

Sales Office
 1155 Dairy Ashford, Ste. 700
 Houston, Texas 77079 USA
 TEL: (713) 510 2210 FAX: (713) 510 2307

Oil States Industries (Thailand) Ltd.
 Sales, Parts & Service
 19 Watchakluya Road
 Huay Pong, Muang
 Rayong 21150
 Thailand
 Tel +66 (0)38 691643
 Fax +66 (0)38 691644



www.oilstates.com

