

# Ariel Compressors Ariel JGJ/2

BRAND	Ariel Compressors
MODEL	Ariel JGJ/2
Max Rated Speed	1800 RPM
Normal Operating Speed	900rpm
Max Rod Load	18,000 lbs
Max Lube Oil Temp	180°F

No.1



# ARIEL CORPORATION

ARIEL FRAME MODEL

JGJ/2

FRAME SERIAL NUMBER

F-15899

STROKE IN

3.50

MAXIMUM RATED SPEED RPM

1900

MINIMUM RATED SPEED RPM

500

MAXIMUM TOTAL ROD LOAD LBS  
(COMPRESSION + TENSION)

42000

ARIEL SHIPPING DATE

Apr-2001

NORMAL LUBE OIL PRESSURE 60 PSI

LUBE OIL PRESSURE SHUTDOWN SETTING 35 PSI

MAXIMUM LUBE OIL TEMPERATURE 190 F

MAXIMUM UNIT SPEED IS MAXIMUM NAME  
PLATE RATED FRAME OR CYLINDER SPEED,  
WHICHEVER IS THE LESSER.

CONSULT ARIEL TECHNICAL MANUAL  
BEFORE PLACING UNIT IN OPERATION  
OR PERFORMING MAINTENANCE

SEVERE PERSONAL INJURY AND PROPERTY  
DAMAGE CAN RESULT IF PRESSURE SYSTEM IS  
NOT COMPLETELY VENTED BEFORE LOSING  
THE BOLTS ON FLANGES, HEADS, WIRE CROPS,  
PICKING, CONSULT ARIEL TECHNICAL MANUAL  
BEFORE PERFORMING ANY MAINTENANCE.

**CAUTION**

SEVERE PERSONAL INJURY AND PROPERTY  
DAMAGE CAN RESULT IF PRESSURE SYSTEM IS  
NOT COMPLETELY VENTED BEFORE LOSING  
THE BOLTS ON FLANGES, HEADS, WIRE CROPS,  
PICKING, CONSULT ARIEL TECHNICAL MANUAL  
BEFORE PERFORMING ANY MAINTENANCE.

**CAUTION**

3-0459



SMITH INTERNATIONAL  
GULF SERVICES, LLC

P.O.Box : 24983, Dubai - U.A.E.

Tel : +971-4-8836268, Fax : +971-4-8836502

E-mail:drilco@emirates.net.ae

OFFSHORE CONTAINER INSPECTION DATA.

OWNER	GSI SERV
ID NO.	L 059
TARE	22000 KG
SWL	NIL
MGW	22000 KG

TEST/INSP	DATE
T-21-04-08	

**⚠ CAUTION**

SEVERE PERSONAL INJURY AND PROPERTY DAMAGE CAN RESULT IF VALVE CAP BOLTING IS NOT INSTALLED TO PROPER TORQUE OF

**160** FT. LBS. **217** N·m

REFER TO TECHNICAL MANUAL FOR PROPER TORQUING PROCEDURE.

A-7279

**ARIEL CORPORATION**

BORE (IN) **3.250** CLASS **RJ-FS**

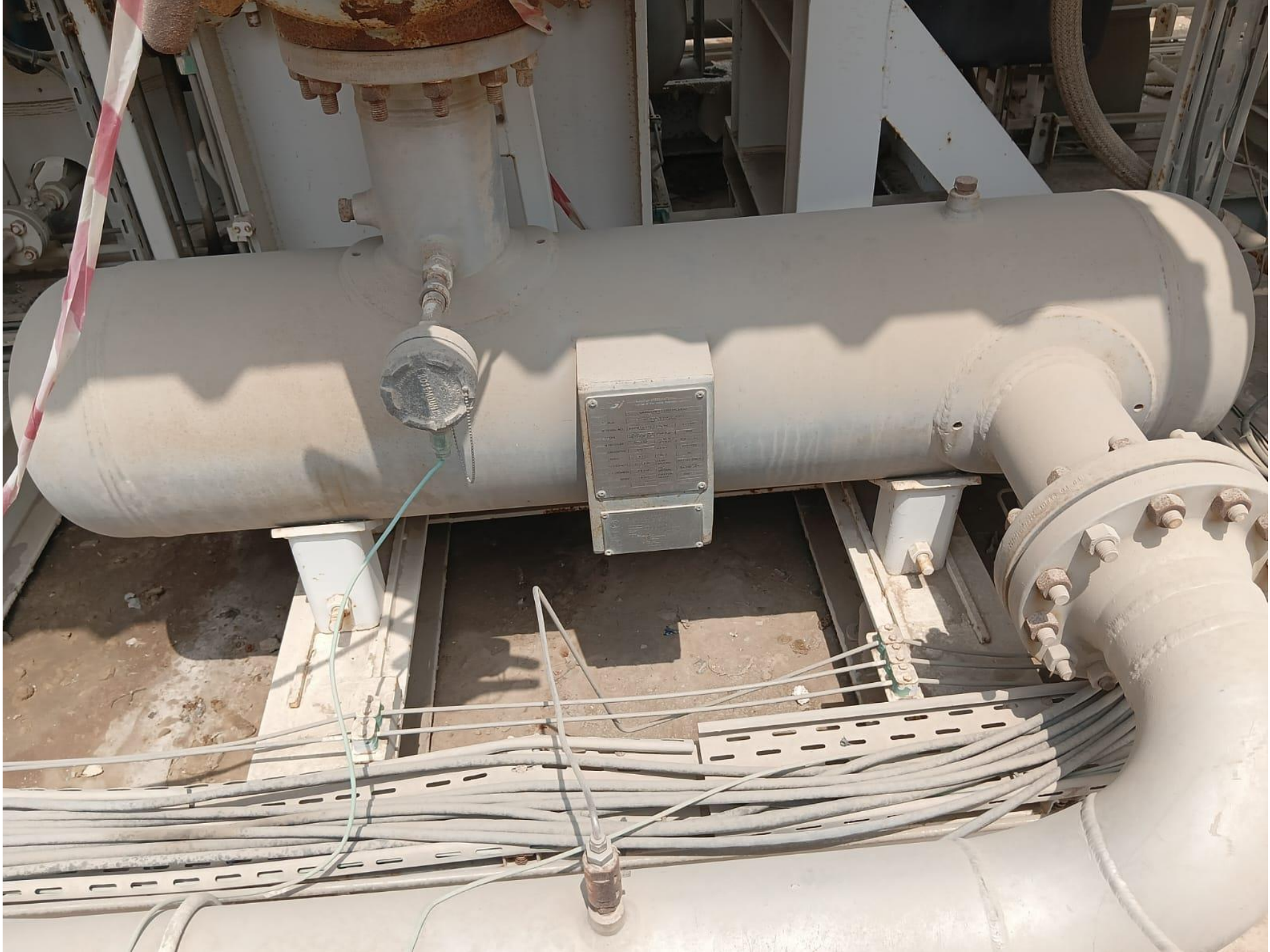
STROKE (IN) **3.5** RATED RPM **1800**

MAX. ALLOWABLE WORKING PRESS. (MAX. RELIEF VALVE SETTING PSIG) **4500**

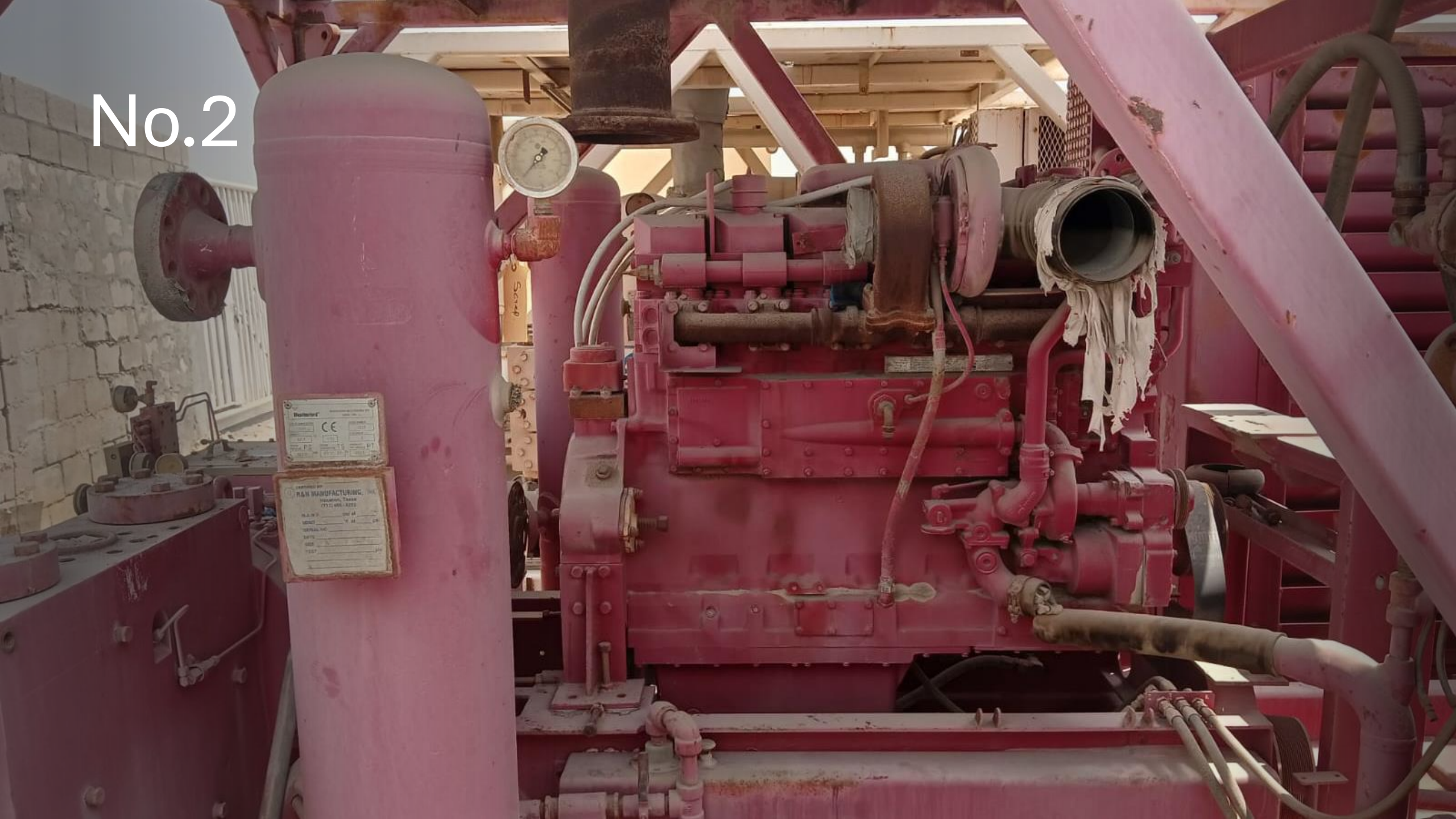
DIST. END CL. HE. OF







No.2



Manufacturer  
CE

CERTIFIED BY  
K&N MANUFACTURING  
Huddersfield, Tameside  
01484 894444

PLATE NO.	DATE
TESTED	BY
TEST	

# ARIEL CORPORATION

ARIEL FRAME MODEL

JGJ/2

FRAME SERIAL NUMBER

15897

STROKE IN.

3.50

MAXIMUM RATED SPEED RPM

1800

MINIMUM RATED SPEED RPM

100

MAXIMUM TOTAL ROD LOAD LBS  
(COMPRESSION + TENSION)

42000

ARIEL SHIPPING DATE

Mar 2001

NORMAL LUBE OIL PRESSURE 60 PSI

LUBE OIL PRESSURE SHUTDOWN SETTING 35 PSI

MAXIMUM LUBE OIL TEMPERATURE 190 F

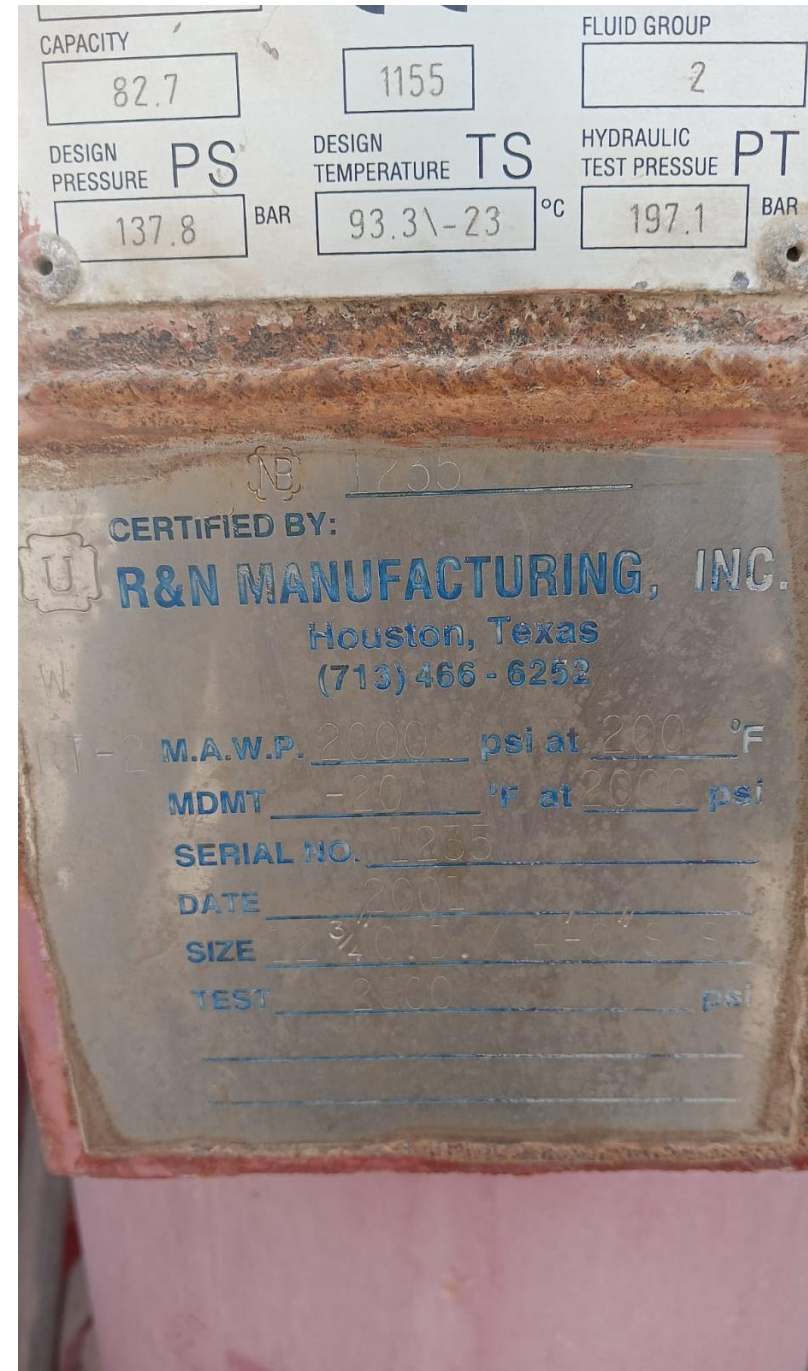
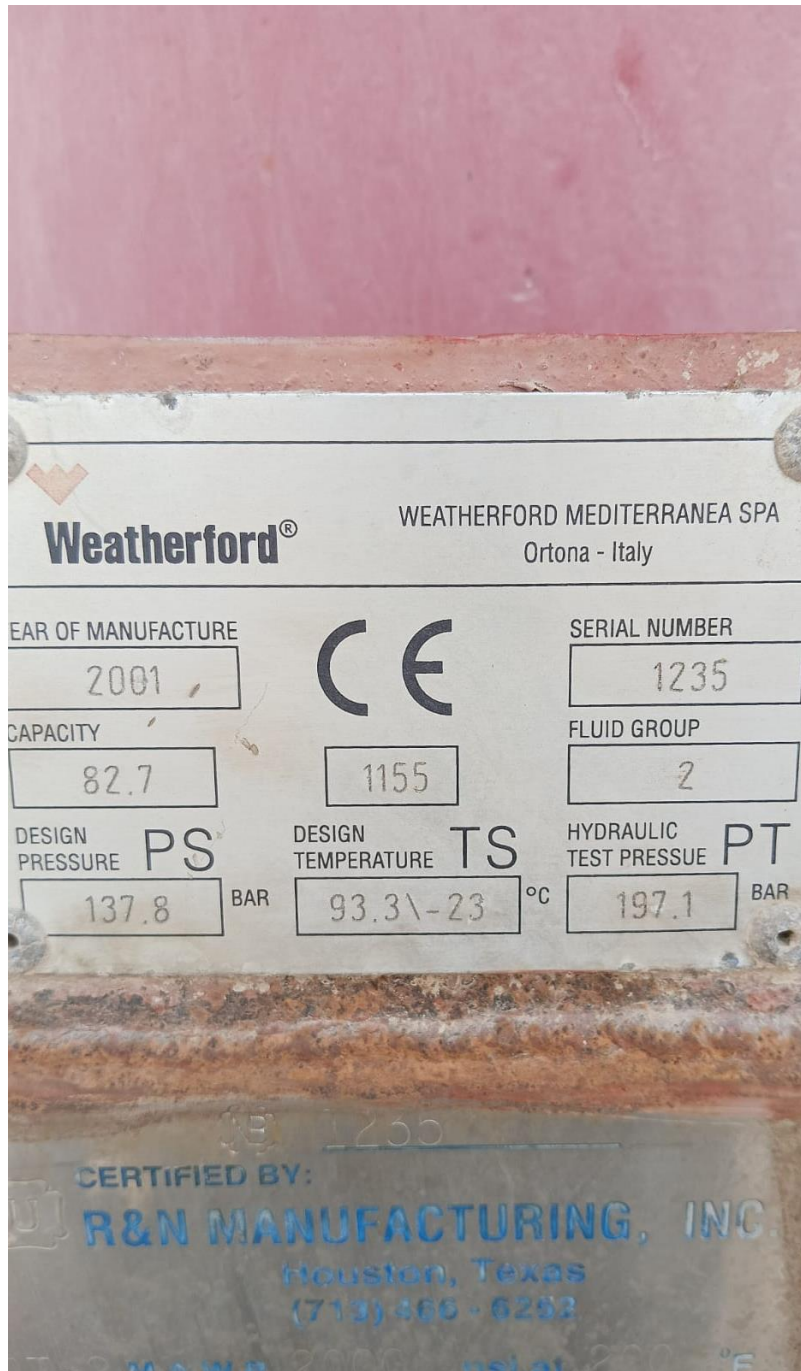
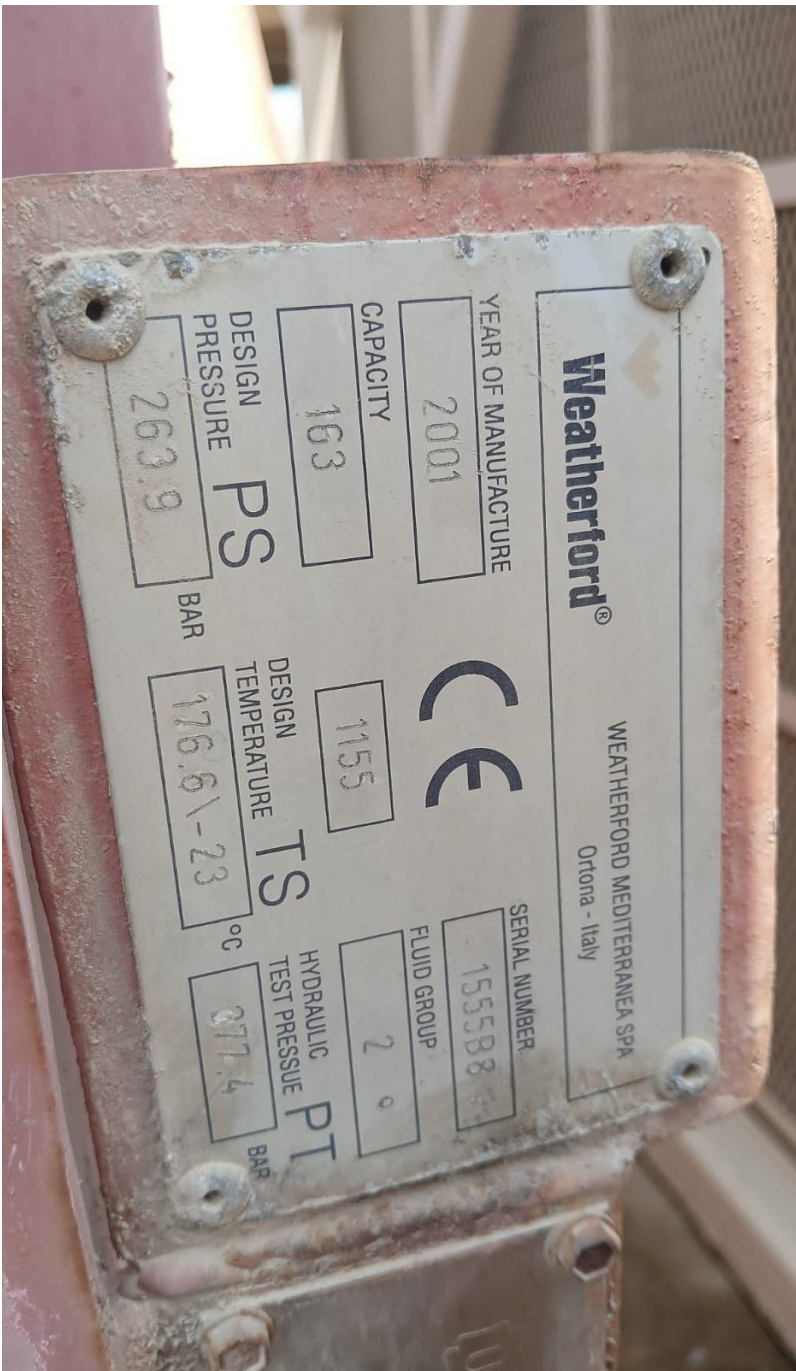
MAXIMUM UNIT SPEED IS MAXIMUM NAME  
PLATE RATED FRAME OR CYLINDER SPEED,  
WHICHEVER IS THE LESSER.

CONSULT ARIEL TECHNICAL MANUAL  
BEFORE PLACING UNIT IN OPERATION  
OR PERFORMING MAINTENANCE

CAUTION

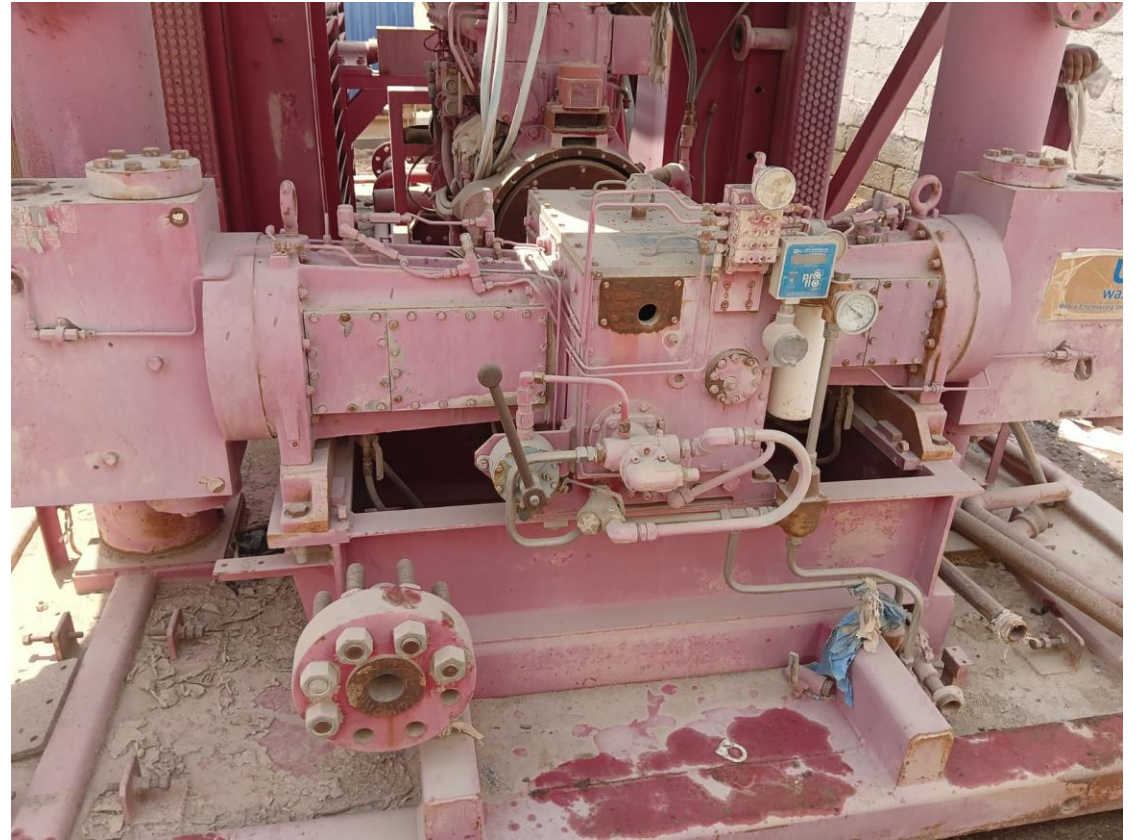
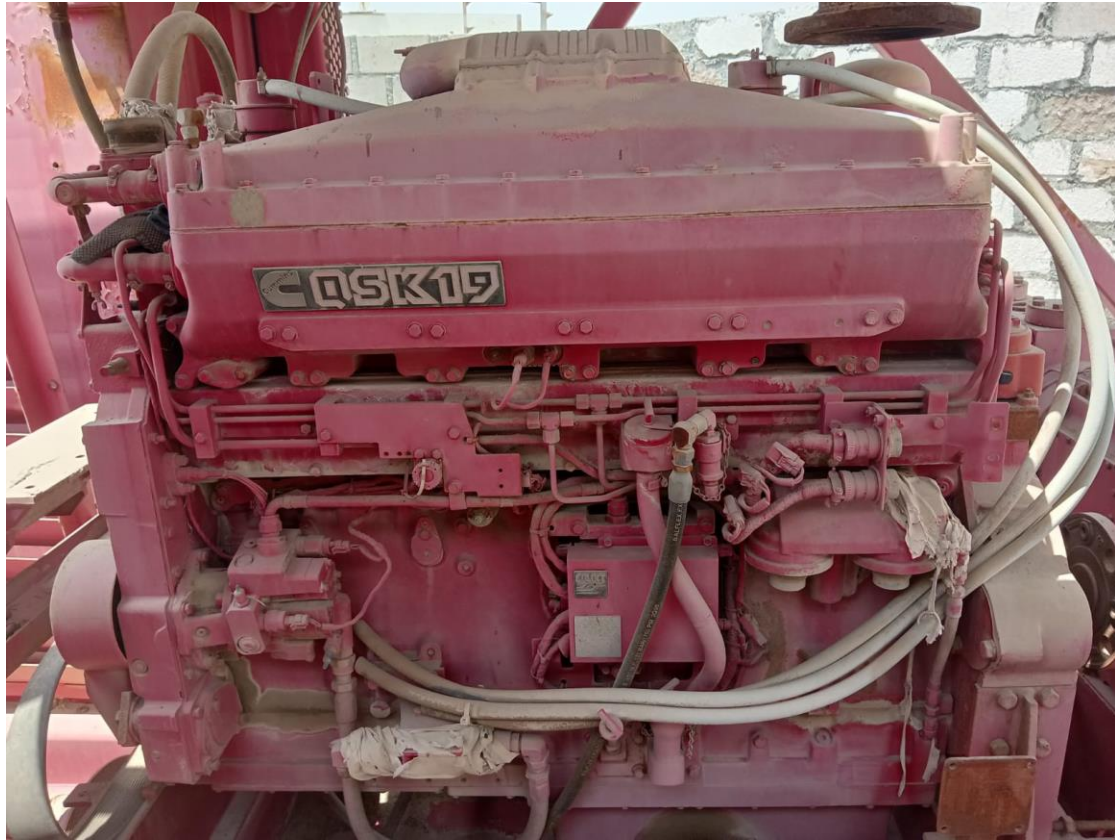
SEVERE PERSONAL INJURY AND PROPERTY  
DAMAGE CAN RESULT IF PRESSURE SYSTEM IS  
NOT COMPLETELY DEPRESSURED BEFORE LOOSENING

CAUTION





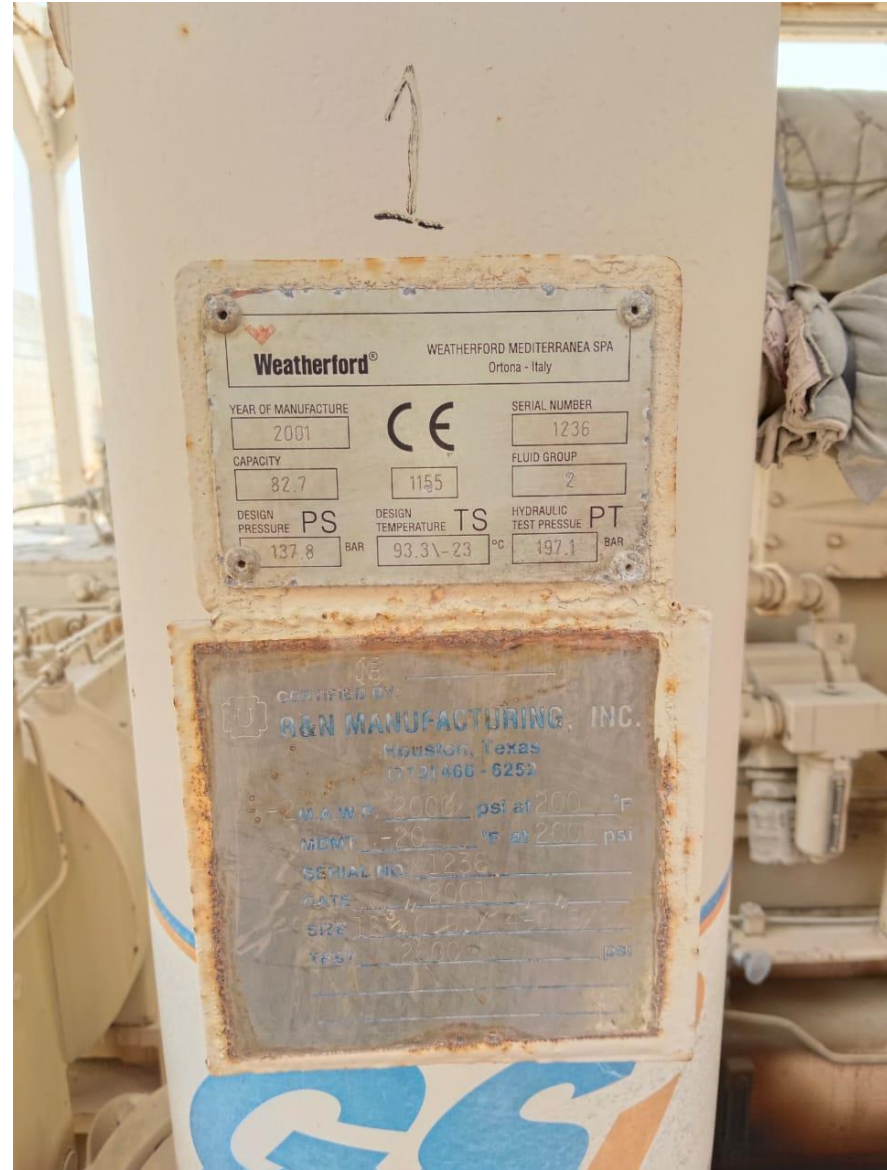




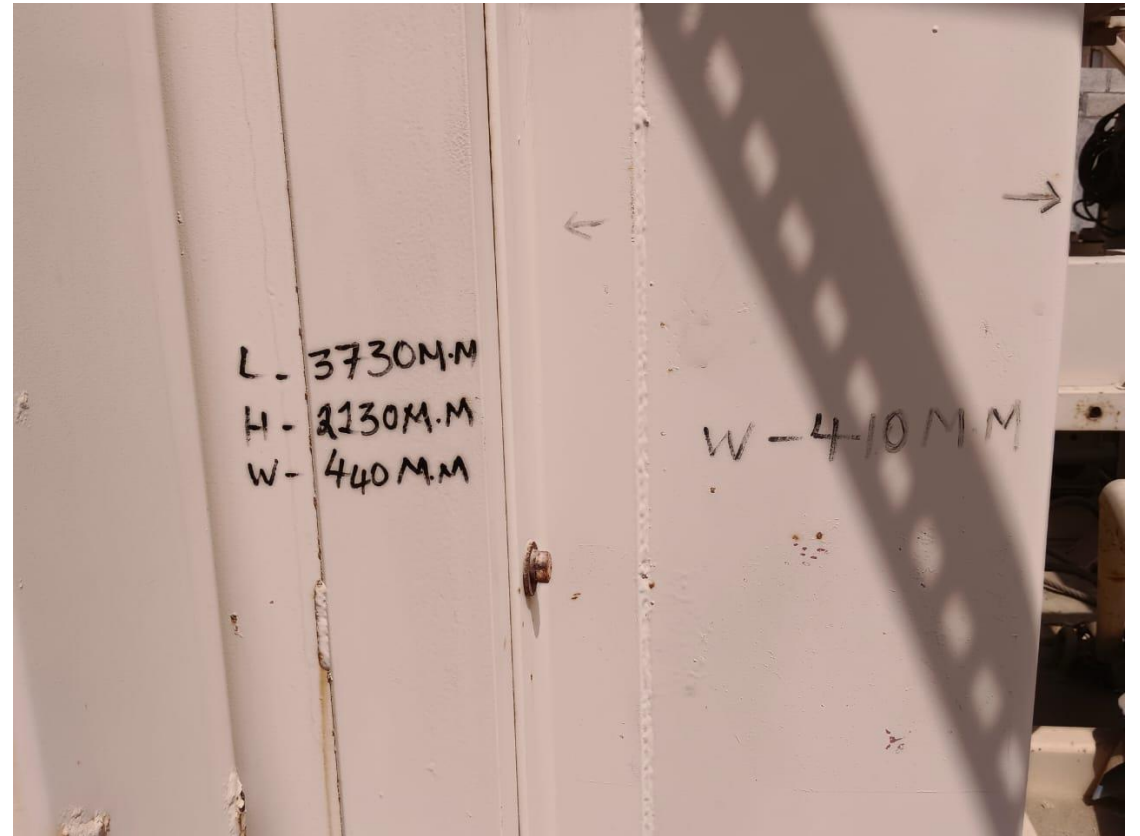
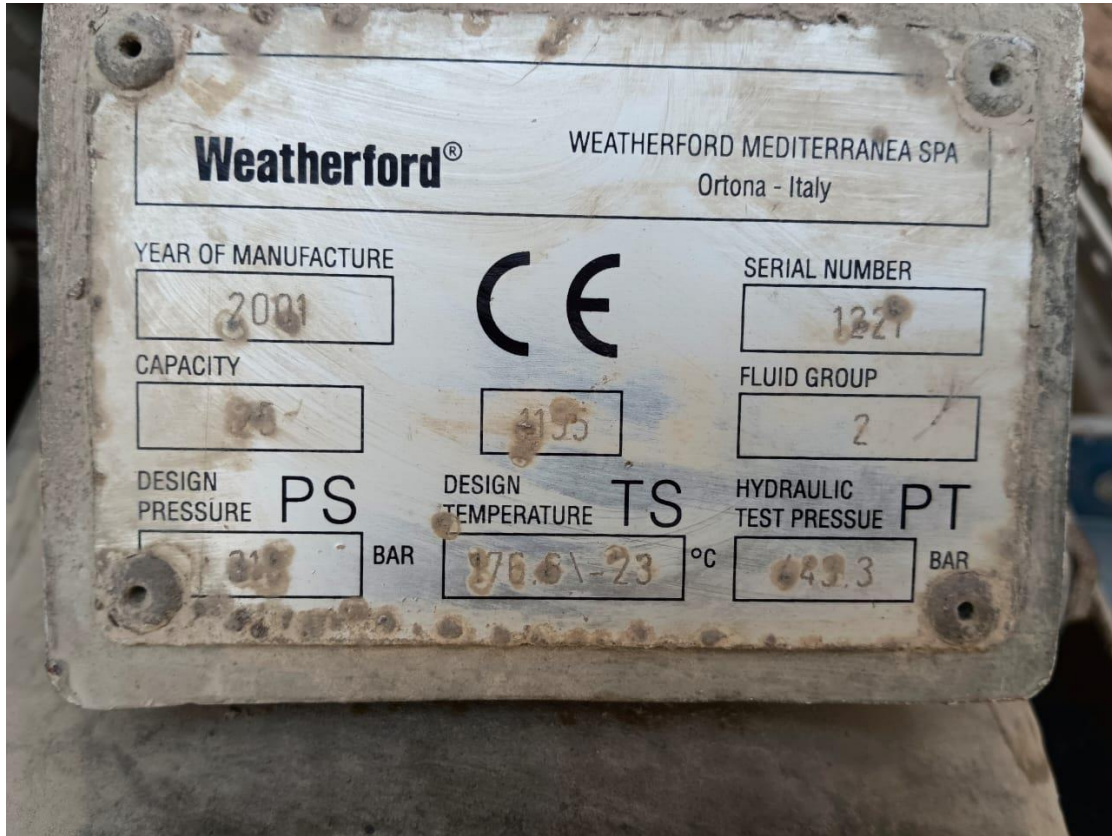
No.3











NE

1228

CERTIFIED BY:



R&N MANUFACTURING, INC.

Houston, Texas

(713) 466-8252

PT-2 M.A.W.P. 2000 psi at 200 °F

MDMT -20 °F at 2000 psi

SERIAL NO. 1228

DATE 2001

SIZE 12 3/4 O.D. X 4'-0" S/S

TEST 2600 psi

**CAUTION**

SEVERE PERSONAL INJURY AND PROPERTY DAMAGE CAN RESULT IF VALVE CAP BOLTING IS NOT INSTALLED TO PROPER TORQUE OF

**160** FT. LBS. **217** N·M

REFER TO TECHNICAL MANUAL FOR PROPER TORQUING PROCEDURE.

**ARIEL CORPORATION**

BORE (IN) **3.250** CLASS **K1FS**

STROKE (IN) **3.5** RATED RPM **1800**

MAX. ALLOWABLE WORKING PRESS. (MAX. RELIEF VALVE SETTING PSIG) **4500**

PIST. END CL. HE **0.70-1.30** CE **0.40**

MIN. VOL. CL. (%) HE **1.15** CE **0.44**

CYLINDER SERIAL NO. **13777**

No.4









